

Generic Contrast Agents

Our portfolio is growing to serve you better. Now you have a *choice*.



[VIEW CATALOG](#)

AJNR

Craniocervical CT and MR Imaging of Schwartz-Jampel Syndrome

Sarah S. Samimi and Walter S. Lesley

AJNR Am J Neuroradiol 2003, 24 (8) 1694-1696

<http://www.ajnr.org/content/24/8/1694>

This information is current as
of May 15, 2025.

Case Report

Craniocervical CT and MR Imaging of Schwartz-Jampel Syndrome

Sarah S. Samimi and Walter S. Lesley

Summary: Schwartz-Jampel syndrome is a rare, inherited disorder characterized by myotonia, skeletal deformities, facial dysmorphism, and growth retardation. In this report of an adolescent male patient with Schwartz-Jampel syndrome, CT and MR imaging revealed basilar invagination, platybasia, Chiari I malformation, hyperpneumatized mastoids with intramastoid dural sinuses, platyspondyly, bulbous zygoma, and blunted pterygoid processes.

Osteochondromuscular dystrophy or Schwartz-Jampel syndrome is an autosomal recessive disease characterized by muscle stiffness, mild muscle weakness, and various skeletal deformities including platyspondyly and kyphoscoliosis (1). The case reported herein illustrates clinically significant CT and MR imaging findings of the face and craniocervical junction in a patient with Schwartz-Jampel syndrome.

Case Report

We present the case report of a 15-year-old white male patient with type IB Schwartz-Jampel syndrome. Shortly after birth, the patient began experiencing severe muscle stiffness, joint deformities at the ankles and knees, and bowing of the legs. After perplexing his physicians for approximately 1 year, genetic testing and review of clinical history confirmed the diagnosis. Physical examination was notable for dysmorphic facies, including blepharophimosis with stiff facial musculature, kyphoscoliosis, and various extremity deformities, but showed intact head and truncal motor control. Because of progressive deformity of the right lower extremity, which prevented ambulation, the patient had undergone several corrective osteotomies of the proximal femur and proximal tibia. He also required excision of the uvula and tonsillectomy for obstructive sleep apnea and was expected to undergo spinal fusion for kyphoscoliosis. With the exception of genetic liability, he had no history of constitutional illness, such as immunocompromise. Showing no evidence of mental retardation, he exhibited normal affect and uplifting optimism despite his disability.

Unenhanced sagittal view MR imaging of the head and cervical spine (Fig 1A) revealed pronounced basilar invagination and narrowing of the sagittal diameter of the upper cervical spine and foramen magnum. In addition, the anterior ring of C1 was rostrally located posterior to the upper clivus on the CT scan (Fig 2A). The nasopharyngeal soft tissues were ele-

vated superiorly (Fig 2B). Brain development and myelination appeared appropriate without cortical atrophy, callosal dysgenesis, or migrational anomaly. However, in association with the basilar invagination and platybasia, a hyperacute angle of the pontomedullary junction and a Chiari I malformation were noted on MR images (Fig 1B). Bulbous zygomatic processes of the maxillae and blunted pterygoid process plates were observed on CT (Fig 3).

Discussion

First described in 1962 by Oscar Schwartz and Robert Jampel (1), Schwartz-Jampel syndrome can be categorized into types 1A, 1B, and 2. Type 1A presents later in childhood and is less severe than type 1B, which usually is apparent at birth and frequently has more prominent bone dysplasia (2). In types 1A and 1B, there does not seem to be a shortened lifespan, but there is significant morbidity associated with constant muscle stiffness and bone abnormalities (3, 4). Type 2 is likely Stuve-Wiedemann syndrome, typified by myotonia, contractures, severe long bone bowing, anesthesia-induced hyperthermia, increased infantile mortality with respiratory distress, and sporadic reports of cortical atrophy revealed by MR imaging and absent corneal reflexes (2, 5–8). Bone and joint deformities contribute to abnormal motor development, which can usually be seen during the first year of life (2). Bone abnormalities include kyphoscoliosis, platyspondyly with resulting dwarfism or diminished stature and a short neck, coxa valga, irregularities of the capital femoral epiphyses, bowing of the long bones, and pectus carinatum (2). In addition, patients exhibit a puckered facial appearance, narrow palpebral fissures (blepharophimosis), micrognathia, and hypertrichosis of the eyelids (2). The incidence of mental retardation in patients with Schwartz-Jampel syndrome has been estimated to be 25% (9). This autosomal recessive disorder is distinguished from other myotonic disorders by its prominent facial features, skeletal deformities, and associated dwarfism (2).

The pathophysiology of the disease is not clearly understood, but electromyography shows nonvariable, continuous high frequency electrical activity (10). Studies have speculated that a mutation in the gene responsible for perlecan, a large heparan sulfate proteoglycan, may be responsible (11). In 1995, the Schwartz-Jampel syndrome gene was mapped to chromosome 1p (locus 1p34-p36.1) in several inbred families of different ethnicity (12). Other genetic or in utero factors may be involved; phenotypical variability has been noted among affected family members.

Received December 31, 2002; accepted after revision March 25, 2003.

From the Saint Louis University School of Medicine, Cardinal Glennon Children's Hospital, St. Louis, MO.

Address reprint requests to Walter S. Lesley, MD, Saint Louis University Hospital, 2nd Floor, Departments of Radiology and Surgery, Sections of Endovascular Neurosurgery and Surgical Neuroradiology, 3635 Vista Avenue, St. Louis, MO 63110.

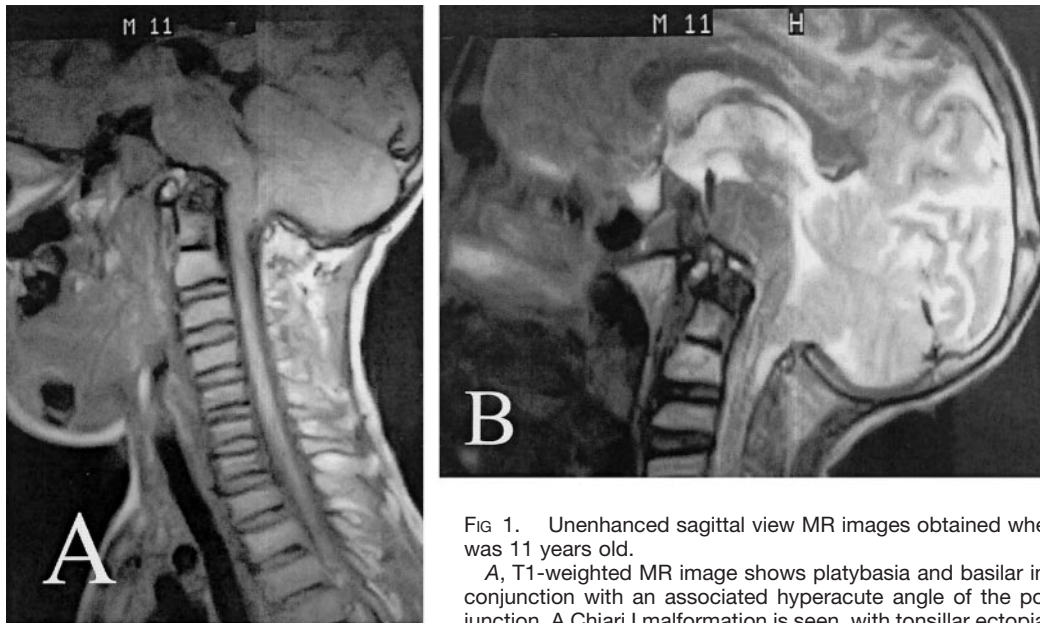


FIG 1. Unenhanced sagittal view MR images obtained when the patient was 11 years old.

A, T1-weighted MR image shows platybasia and basilar invagination in conjunction with an associated hyperacute angle of the pontomedullary junction. A Chiari I malformation is seen, with tonsillar ectopia 7 mm below

the opisthion-basion line. Multilevel, cervicothoracic platyspondyly is readily apparent.

B, T2-weighted MR image.

Approximately 85 cases of Schwartz-Jampel syndrome have been reported with the overwhelming majority of publications addressing the genetic considerations and the imaging abnormalities of the appendicular skeleton and spine. The literature regarding conventional radiology of Schwartz-Jampel syndrome describes the many osseous abnormalities that range from pelvic deformity and irregularities in the long bones to scoliosis, platyspondyly, and deficient ossification centers or coronal clefts in anterior vertebral bodies (13). CT has documented abnormally high attenuation in the sternocleidomastoid muscles and low attenuation in the paraspinal, quadriceps, sartorius, soleus, and gastrocnemius muscles (14). Cranial sonography found corpus callosal agenesis, a prominent third ventricle, and a large cyst of the septum pellucidum in one patient who displayed features of both Schwartz-Jampel syndrome and Stuve-Wiedemann syndrome (15). In a separate case of Stuve-Wiedemann syndrome, cortical brain atrophy was noted on MR images (7). Of note, the results of cross-sectional imaging (CT of the head, two pa-

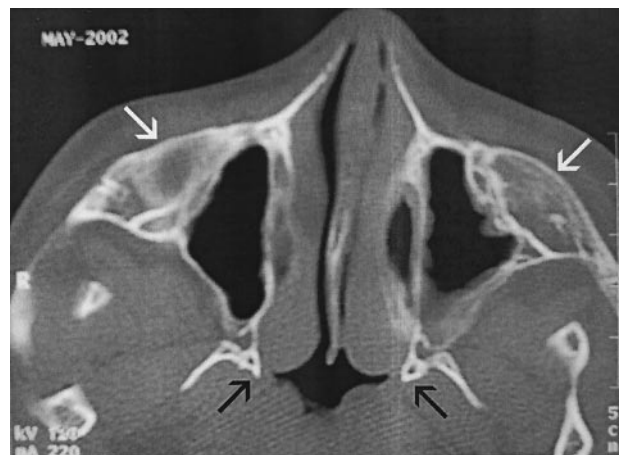


FIG 3. Axial view unenhanced CT scan obtained when the patient was 15 years old. Bulbous zygomatic processes (white arrows) of the bilateral maxillae and blunted pterygoid process medial plates (black arrows) are noted. Prominent nasopharyngeal soft tissues nearly obliterate the upper airway.

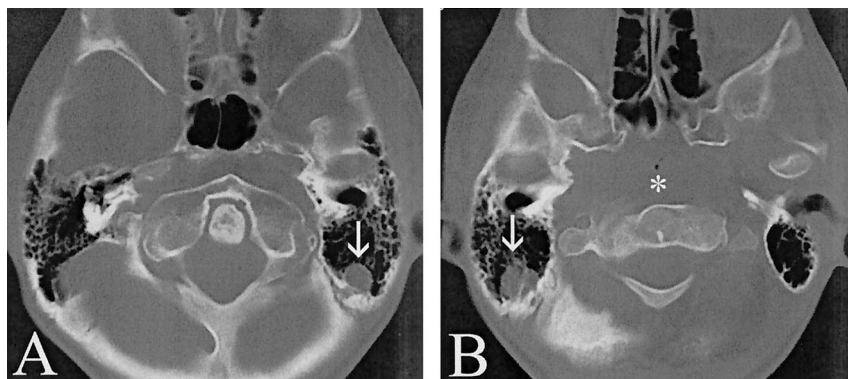


FIG 2. Axial view unenhanced CT scans obtained when the patient was 15 years old.

A, Basilar invagination is evidenced by the rostral location of the C1 ring posterior to the upper clivus. Hyperpneumatized mastoids are seen surrounding portions of the left sigmoid-transverse sinus junction (arrow).

B, Hyperpneumatized mastoids are seen surrounding portions of the right sigmoid-transverse sinus junction (arrow). Note the rostral location of the nasopharyngeal soft tissues (asterisk) relative to the orbits, mimicking a destructive process of the skull base.

tients; transcranial sonography, one patient) of three patients with type 2 Schwartz-Jampel syndrome (ie, Stuve-Wiedemann syndrome) were reported to be normal according to a study by Al-Gazali et al (16). In a separate publication illustrating a 16-year-old female patient with Schwartz-Jampel syndrome and compressive myelopathy, platybasia and basilar impression of the skull were shown on plain roentgenograms whereas myelography showed narrowing of the cervical sagittal diameter from the third to sixth cervical "roots" and dorsal displacement of the cord (17). Overall, no clear pattern has emerged in classifying the neuroradiologic findings of patients with Schwartz-Jampel syndrome or Stuve-Wiedemann syndrome.

Conclusion

Schwartz-Jampel syndrome is a rare disease with much variability and degree of severity. The cranio-cervical MR imaging and CT findings presented might represent an unrecognized subtype or variant of Schwartz-Jampel syndrome. Further reports of Schwartz-Jampel syndrome and the associated cross-sectional imaging findings should assist in furthering the understanding of, and subclassification within, this inherited disease.

References

1. Schwartz O, Jampel RS. **Congenital blepharophimosis associated with a unique generalized myopathy.** *Arch Ophthalmol* 1962;68:52-57
2. Katirji B, Kaminski HJ, Preston DC, Ruff RL, Shapiro BE, eds. *Neuromuscular Disorders in Clinical Practice*. Boston: Butterworth-Heinemann; 2002:1013-1015
3. Giedion A, Boltshauser E, Briner J, et al. **Heterogeneity in Schwartz-Jampel chondrodystrophic myotonia.** *Eur J Pediatr* 1997;156:214-223
4. Spranger J, Hall BD, Hane B, Srivastava A, Stevenson RE. **Spectrum of Schwartz-Jampel syndrome includes micromelic chondrodysplasia, kyphomelic dysplasia, and Burton disease.** *Am J Med Genet* 2000;94:287-295
5. Superti-Furga A, Tenconi R, Clementi M, et al. **Schwartz-Jampel syndrome type 2 and Stuve-Wiedemann syndrome: a case for "lumping."** *Am J Med Genet* 1998;78:150-154
6. Wiedemann HR, Stuve A. **Stuve-Wiedemann syndrome: update and historical footnote.** *Am J Med Genet* 1996;63:12-16
7. Chabrol B, Sigaudy S, Paquis V, et al. **Stuve-Wiedemann syndrome and defects of the mitochondrial respiratory chain.** *Am J Med Genet* 1997;72:222-226
8. Chen E, Cotter PD, Cohen RA, Lachman RS. **Characterization of a long-term survivor with Stuve-Wiedemann syndrome and mosaicism of a supernumerary marker chromosome.** *Am J Med Genet* 2001;101:240-245
9. Paradis CM, Gironde F, Bennett M. **Cognitive impairment in Schwartz-Jampel syndrome: a case study.** *Brain Lang* 1997;56:301-305
10. Jablbecki C, Schultz P. **Single muscle fiber recordings in the Schwartz-Jampel syndrome.** *Muscle Nerve* 1982;5:S64-S69
11. Arikawa-Hirasawa E, Le AH, Nishino I, et al. **Structural and functional mutations of the perlecan gene cause Schwartz-Jampel syndrome, with myotonic myopathy and chondrodysplasia.** *Am J Hum Genet* 2002;70:1368-1375
12. Nicole S, Ben Hamida C, Beighton P, et al. **Localization of the Schwartz-Jampel syndrome (SJS) locus to chromosome 1p34-p36.1 by homozygosity mapping.** *Hum Mol Genet* 1995;4:1633-1636
13. Taybi H, Lachman RS. *Radiology of Syndromes, Metabolic Disorders, and Skeletal Dysplasias*. 4th ed. St. Louis: Mosby; 1996:445-446
14. Iwata H, Ozawa H, Kamei A, et al. **Siblings of Schwartz-Jampel syndrome with abnormal muscle computed tomographic findings.** *Brain Dev* 2000;22:494-497
15. Al-Gazali LI, Bakir M, Hamid ZM, Nath R, Haas D. **Congenital bowing of the long bones associated with camptodactyly, talipes equinovarus and agenesis of the corpus callosum.** *Clin Dysmorphol* 2000;9:93-97
16. Al-Gazali LI, Varghese M, Varady E, Al Talabani J, Scorer J, Bakalinova D. **Neonatal Schwartz-Jampel syndrome: a common autosomal recessive syndrome in the United Arab Emirates.** *J Med Genet* 1996;33:203-211
17. Smith DL, Shoumaker R, Shuman R. **Compressive myelopathy in the Schwartz-Jampel syndrome.** *Ann Neurol* 1981;10:497