

# Generic Contrast Agents

Our portfolio is growing to serve you better. Now you have a *choice*.



[VIEW CATALOG](#)

# AJNR

## **Prefrontal *N*-Acetylaspartate and Poststroke Recovery: A Longitudinal Proton Spectroscopy Study**

L. Glodzik-Sobanska, J. Li, L. Mosconi, A. Slowik, J. Walecki, A. Szczudlik, B. Sobiecka and M.J. de Leon

This information is current as of May 11, 2025.

*AJNR Am J Neuroradiol* 2007, 28 (3) 470-474  
<http://www.ajnr.org/content/28/3/470>

ORIGINAL  
RESEARCH

L. Glodzik-Sobanska  
J. Li  
L. Mosconi  
A. Slowik  
J. Walecki  
A. Szczudlik  
B. Sobiecka  
M.J. de Leon

# Prefrontal *N*-Acetylaspartate and Poststroke Recovery: A Longitudinal Proton Spectroscopy Study

**BACKGROUND AND PURPOSE:** Functional imaging studies suggest that poststroke recovery is related to the reorganization in both contralesional and ipsilesional prefrontal cortex. Little is known, however, about how longitudinal metabolic changes in prefrontal regions relate to the improvement after stroke. We sought to determine whether poststroke recovery is associated with changes in *N*-acetylaspartate/creatine (NAA/Cr) ratio within contralesional prefrontal regions.

**MATERIALS AND METHODS:** Twenty-seven patients with a first ischemic stroke located outside the frontal lobes were included. Proton MR spectroscopy (<sup>1</sup>H-MRS) was performed on a 1.5T scanner. Point-resolved spectroscopy sequence (PRESS) was used. NAA/Cr was measured both in ipsilesional and contralesional prefrontal regions in early ( $14 \pm 6$  days after stroke) and chronic phases of the disease ( $110 \pm 30$  days after). Patients' neurologic status was assessed using Scandinavian Stroke Scale (SSS) at discharge from the stroke unit and during second <sup>1</sup>H-MRS examination.

**RESULTS:** Subjects showing increased contralesional NAA/Cr from first to follow-up examination improved significantly more on the SSS than patients not showing this increase. Analysis was performed while correcting for change in NAA/Cr levels in the ipsilesional hemisphere. For the whole group, the change in contralesional NAA/Cr was significantly correlated to the change in SSS scores ( $r = 0.40$ ,  $P = .03$ ). Change in the ipsilesional NAA/Cr measures did not correlate with the change in SSS scores.

**CONCLUSION:** Poststroke recovery was related to the increase in contralesional prefrontal NAA/Cr. This association may reflect recovery mechanisms involving the nonaffected hemisphere. Further assessment of these regions may provide information about mechanisms contributing to neurologic improvement.

Poststroke improvement occurs mostly during the first weeks to 3 months after the onset.<sup>1</sup> The reorganization of the spared neuronal circuits and the recruitment of additional cortical areas play a major role in the recovery. Functional MR imaging (fMRI) and positron-emission tomography (PET) studies indicate that activity in the contralesional prefrontal cortex (PFC) is important for functional restoration.<sup>2,3</sup> However there is only limited in vivo information on the poststroke biochemical changes in this region.

Proton MR spectroscopy (<sup>1</sup>H-MRS) in stroke research is considered a sensitive tool for the assessment of metabolic abnormalities, which are detected even in the absence of structural MR changes.<sup>4</sup> *N*-acetylaspartate (NAA) is a commonly used marker of neuronal integrity.<sup>5</sup> Very little work has been done to longitudinally examine changes in NAA levels outside the lesional area in relationship to clinical recovery. Although there is evidence for a correlation between NAA levels outside the stroke lesion and neurologic status,<sup>4</sup> no longitudinal effects were reported in the contralesional hemisphere.

We designed a longitudinal single voxel <sup>1</sup>H-MRS study that assessed patients in the subacute phase of ischemic stroke and 4 months later. Our hypothesis was that poststroke recovery would be related to increase in NAA levels in the prefrontal region (PFR) contralesional to the stroke.

## Materials and Methods

### Subjects

Twenty-seven consecutive patients (15 women, 12 men; mean age,  $63 \pm 9$  years; range, 45–80 years) recruited in the stroke unit were included in this study. Written informed consent was obtained from all subjects. The inclusion criterion was a first ischemic stroke defined according to the WHO criteria.<sup>6</sup> All patients had strokes in the territory of the middle cerebral artery, except for 2 persons who had strokes in the territory of posterior cerebral artery. Exclusion criteria were: cerebral hemorrhage, more than 1 stroke lesion visible on CT (performed at baseline in every case), lesion localized in the frontal lobes in the territory of the anterior cerebral artery, signs of cerebellar or brain stem injury on neurologic or CT examinations, severe aphasia, poor general clinical status, disturbances of consciousness, prior history of demyelinating or neurodegenerative disorders, and head injury.

Control group consisted of 20 (40% women) healthy volunteers (no prior or recent history of psychiatric or neurologic disorders) recruited from among patients' family members and hospital staff. The subjects' mean age was  $59.7 \pm 9$  years (range, 50–79 years). The written informed consent was obtained in every case. In the control group, the imaging was performed only once.

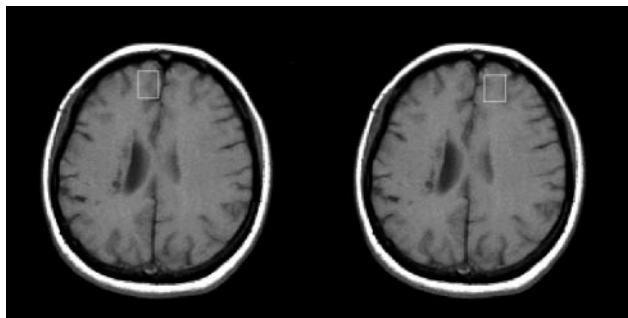
Received March 7, 2006; accepted after revision May 22.

From the Center for Brain Health (L.G.-S., J.L., L.M., M.J.d.L.), New York University School of Medicine, New York, NY; Department of Neurology, Institute of Neurology (A.S., A.S.) and Department of Radiology (B.S.), Jagiellonian University, Krakow, Poland; and Medical Research Center (J.W.), Polish Academy of Science, Warsaw, Poland.

The authors have no conflicts of interest. The work was supported by Polish State Committee of Scientific Research KBN grant 6P05B07420.

Paper previously presented at: 91st Scientific Assembly and Annual Meeting of the Radiological Society of North America, November 27–December 2, 2005; Chicago, Ill.

Address correspondence to Lidia Glodzik-Sobanska, Center for Brain Health, New York University School of Medicine, 550 First Ave, MHL-400, New York, NY, 10016-6481; e-mail: lidia.sobanska@med.nyu.edu



**Fig 1.** Positioning of the MR spectroscopy VOIs.

### Clinical Outcome/Follow-up Examinations

Clinical assessments were performed at baseline (on the day of hospital discharge; poststroke time,  $14 \pm 6$  days) and at follow-up (poststroke time,  $110 \pm 30$  days). The Scandinavian Stroke Scale (SSS) was used to rate disability. This scale consists of 9 items, describing consciousness, eye movements, strength of extremities, orientation, speech, facial movements, and gait. The greater the total score (range/0–58), the better the patient's clinical status.<sup>7</sup> Baseline and follow-up MR and <sup>1</sup>H-MRS imaging was done at the time of each clinical assessment.

### Imaging

Both MR imaging and <sup>1</sup>H-MRS were performed on a 1.5T scanner. T1-weighted (TR, 500 ms; TE, 12.6 ms) and T2-weighted (TR, 5000 ms; TE, 100 ms) structural MR images in the axial plane were obtained, with a section thickness of 6 mm and an intersection gap of 2 mm.

The lesions were classified into 3 subgroups: subcortical, cortical, and mixed. To calculate irregular lesion volumes we used the formula  $A \times B \times C/2$ . On T2-weighted baseline images, we measured the largest diameter (A) and the perpendicular diameter (B) of the ischemic lesion, and the third diameter (C) by summing up the thicknesses of the sections where the lesion was visible.<sup>8</sup>

For the <sup>1</sup>H-MRS, a single voxel (of approximately 6 mL) was positioned on the T1-weighted MR images (Fig 1). In every case, we positioned the voxels symmetrically in the right and left frontal lobes. The volumes of interest (VOIs) consisted of normal-appearing tissue, in the region of the frontal poles, near the midline, outside the area of infarction (principally in the superior frontal gyrus, in the territory of the anterior cerebral artery). Although the voxel encompassed both white and gray matter of the superior frontal gyrus (SFG), positioning was done to obtain maximum gray matter content. The acquisition of <sup>1</sup>H-MRS spectra with a point-resolved spectroscopy sequence (PRESS) (TR, 1500 ms; TE, 35 ms; acquisition number, 256) was preceded by a shimming. Water suppression was achieved by chemical shift selection sequence (CHESS). Peaks for NAA (at a chemical shift of 2.02 ppm) and creatine (Cr; 3.03 ppm) were determined automatically with the SAGE spectroscopy analysis software (GE Medical Systems, Fremont, Calif). Line broadening value is set to 1.25 Hz. This value gave good resolution between choline and Cr peaks, which was important because we used Cr as a reference. An NAA-to-Cr ratio (NAA/Cr) was calculated by expressing the NAA peak integral values relative to the Cr peak. Two experienced operators, blind to the patients' clinical status, performed MR spectroscopy procedures. The same procedure was carried during all examinations.

Because of the design of the study, the use of the control group poses some difficulties with interpretation as we compared baseline

and follow-up SSS scores between patient groups. However, to check the reproducibility of MR spectroscopy measurements, we performed MR spectroscopy in 20 healthy subjects, with the same protocol. Although the control group had MR spectroscopy only once, in every case examinations of 2 homologous regions were performed. In every subject from the control group, VOIs were located first in the right and then in the left prefrontal region, as described above for the patient group. The control group did not differ from stroke patients in age ( $t = -1.2$ ,  $df = 45$ ,  $P = 0.2$ ) and gender ( $\chi^2 = 1.1$ ,  $df = 1$ ,  $P = .3$ ). In healthy control subjects the NAA/Cr ratios for left and right hemispheres did not differ (mean  $NAA/Cr_{right} = 1.74$ ,  $SD = 0.2$ ; mean  $NAA/Cr_{left} = 1.63$ ,  $SD = 0.32$ ,  $t = -1.2$ ,  $df = 38$ ,  $P = .2$ ). Moreover standard deviations were not different between 2 hemispheres (Levene test  $F = 1.6$ ,  $P = .2$ ), confirming the reproducibility of the measurements.

### Statistical Analysis

$\chi^2$  and  $t$  tests for independent samples were used to examine the clinical and demographic characteristics.

The NAA/Cr ratios were calculated separately in the contralesional and ipsilesional hemispheres. Based on the longitudinal increase or decrease in the contralesional PFR NAA/Cr ratio, calculated as:  $\Delta NAA/Cr = NAA/Cr_{follow-up} - NAA/Cr_{baseline}$ , subjects were dichotomized as "NAA/Cr<sub>Increase</sub>" group with  $\Delta NAA/Cr > 0$ , and "NAA/Cr<sub>No Increase</sub>" with  $\Delta NAA/Cr \leq 0$ . To assess the hypothesis that NAA/Cr increases in the contralesional hemisphere would be best associated with clinical improvement on the SSS, we used the general linear model/repeated-measures analysis to examine the longitudinal changes in SSS scores between the NAA/Cr<sub>Increase</sub> and the NAA/Cr<sub>No Increase</sub> subgroups, while correcting for the change in NAA/Cr levels in the ipsilesional hemisphere ( $\Delta NAA/Cr = NAA/Cr_{follow-up} - NAA/Cr_{baseline}$ ). This correction was made assuming that if changes in metabolites occur, it is highly unlikely they take place in only one hemisphere. Therefore, we decided to use  $\Delta NAA/Cr$  in the ipsilesional hemisphere as a covariate in the repeated-measures analysis.

Spearman correlations were used to assess the relationship between the changes in SSS scores and NAA/Cr measures and between lesion volume and NAA/Cr. All statistical analyses were performed using SPSS 12 (SPSS, Chicago, Ill).

### Results

For the whole patient group ( $n = 27$ ), the mean SSS scores were  $46.5 \pm 9.5$  at baseline and  $53.0 \pm 6.2$  at follow-up. The mean improvement was  $17 \pm 18\%$  (range, 0%–71%). None of the subjects showed a worsening in neurologic status.

The NAA/Cr<sub>Increase</sub> group consisted of 14 of 27 (52%) patients showing longitudinally increased NAA/Cr in the contralesional PFR, and the NAA/Cr<sub>No Increase</sub> group consisted of 13 of 27 (48%) patients. No difference was found between the NAA/Cr<sub>Increase</sub> and the NAA/Cr<sub>No Increase</sub> groups for age, sex, time to follow-up, lesion location, and the prevalence of stroke risk factors (Table). The NAA/Cr<sub>Increase</sub> group had significantly larger lesion volume ( $t_{25} = 2.7$ ,  $P < .05$ ).

At baseline, the SSS scores were lower for the NAA/Cr<sub>Increase</sub> group compared with the NAA/Cr<sub>No Increase</sub> group ( $t_{25} = 2.1$ ,  $P < .05$ ). This difference was no longer significant at follow-up (Table 1).

At baseline, lesion volume correlated significantly with NAA/Cr in the contralesional PFR ( $r = -0.44$ ,  $P < .05$ ). In

# Subjects' demographic and clinical characteristics by contralesional groups

	NAA/Cr <sub>Increase</sub>	NAA/Cr <sub>No Increase</sub>
N	14	13
Age, baseline (years)	63.3 ± 8.6	62.6 ± 10.1
% Female	43	69
Time to follow-up (days)	103.4 ± 16.6	116.7 ± 39.7
Side of stroke (right/left) (N)	6/8	6/7
Lesion volume (mm <sup>3</sup> )	28.3 ± 30.4*	4.7 ± 8.0*
Lesion location		
Subcortical (N)	6	9
Cortical (N)	3	1
Both (N)	5	3
Stroke risk factors		
Hypertension (N)	9	10
Hypercholesterolemia (N)	7	7
Atrial fibrillation (N)	1	2
Diabetes (N)	3	5
NAA/Cr <sub>contralesional</sub>		
Baseline	1.50 ± .029*	1.84 ± 0.38*
Follow-up	1.87 ± 0.04*	1.51 ± 0.26*
Change	0.37 ± 0.32*	−0.32 ± 0.32*
NAA/Cr <sub>ipsilesional</sub>		
Baseline	1.66 ± 0.24	1.87 ± 0.44
Follow-up	1.50 ± 0.37	1.63 ± 0.17
Change	−0.15 ± .47	−0.23 ± .51
SSS Scores		
Baseline	43.0 ± 10.2*	50.3 ± 7.5*
Follow-up	52.1 ± 5.3	54.1 ± 7.0
Change	9.1 ± 5.3*	3.76 ± 3.1*
% Improvement	25.4 ± 21.10*	8.04 ± 6.8*

**Note:**—NAA indicates N-acetylaspartate; Cr, creatine. Values are means ± SD.  
\*  $P < 0.05$

case of the ipsilesional PFR, the correlation did not reach statistical significance ( $r = -0.34$ ,  $P = .08$ ).

For the whole group, the change in contralesional NAA/Cr was significantly correlated to the change in SSS scores ( $r = 0.42$ ,  $P = .03$ ; Fig 2A). Conversely, the ipsilesional NAA/Cr measures were not associated with the change in SSS scores ( $P > .5$ ).

Both the NAA/Cr<sub>Increase</sub> and the NAA/Cr<sub>No Increase</sub> groups showed significantly improved SSS scores at follow-up relative to baseline examination ( $F_{1,24} = 45.9$ ,  $P < .001$ ) (Fig 2B). However, we also found time by group effect, with the NAA/Cr<sub>Increase</sub> group showing significantly greater improvement in SSS scores compared with the NAA/Cr<sub>No Increase</sub> group ( $F_{1,24} = 9.25$ ,  $P < .01$ ) (Fig 2B). Mean  $\Delta$ SSS in the NAA/Cr<sub>Increase</sub> group was 9.1 points and in the NAA/Cr<sub>No Increase</sub> group, it was 3.7 points.

One could argue that lacunar strokes might have different recovery mechanisms, so we replicated the repeated-measures analysis excluding 4 subjects with lacunar strokes. The same group by time effect was found: subjects in the NAA/Cr<sub>Increase</sub> group showed greater neurologic improvement over time than those in the NAA/Cr<sub>No Increase</sub> group ( $F_{1,20} = 8.66$ ,  $P < .01$ ). In both analyses, we used the change in the ipsilesional PFR NAA/Cr over time ( $\Delta$ NAA/Cr) as a covariate.

## Discussion

This longitudinal <sup>1</sup>H-MRS study demonstrates an association between NAA/Cr changes in the PFR contralateral to the ischemic stroke and improvement in the clinical status.

To our knowledge, only one longitudinal MR spectroscopy study has been performed that related changes in NAA/Cr levels in nonaffected frontal regions to the clinical status after stroke. In the group with subcortical hemorrhage, Kobayashi et al<sup>4</sup> showed significantly decreased NAA/Cr in the ipsilesional primary motor area in the group with unfavorable outcome; this measure continued to decrease during the subsequent 2 weeks. In the group with favorable outcome, the NAA/Cr values remained stable over time. No association between contralesional NAA/Cr changes and clinical outcome was reported.

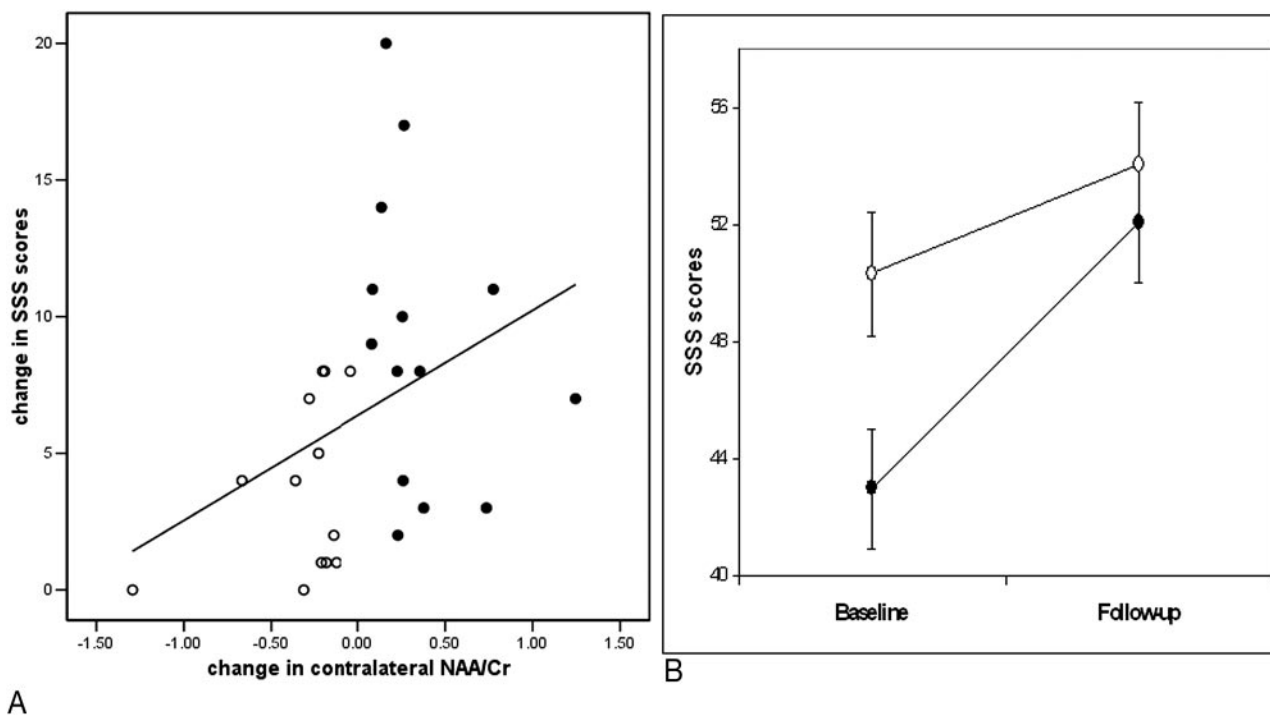
The present study in patients with ischemic stroke shows that increasing PFR NAA/Cr ratio over time is associated with the clinical improvement, as measured on the SSS scores. Our regions of interest were located in the PFR, mainly localized in the superior frontal gyrus corresponding to Brodmann area (BA) 9. The PFC, especially BA 9, is implicated in high-order cognitive functions related to motor control, learning, imagery, and visual perception.<sup>9</sup> Functional MR imaging studies revealed that even imagination of a movement activates this area.<sup>10</sup> Moreover, previous functional imaging studies indicate that the PFC is involved in recovery-related mechanisms.<sup>2,11</sup> An fMRI study<sup>11</sup> showed that performing a motor task using the paretic hand activated the bilateral prefrontal areas. Likewise, an activation PET study showed that passive movements of the affected hand triggered an increase in cerebral blood flow in the contralesional PFC.<sup>2</sup>

NAA performs several functions in the central nervous system. It acts as an osmolyte, plays a role in myelination, and regulates protein synthesis.<sup>5</sup> NAA is generally seen as marker of neuronal viability.<sup>5</sup> It is thus likely that poststroke recovery, which involves learning of motor skills and repeated exercise, is related to changes in NAA levels in the cortical areas serving as an anatomic substrate for this process (ie, the PFRs).

In this study, the classification of patients was done a posteriori based on the contralesional  $\Delta$ NAA/Cr value. One can argue that groups were unbalanced in terms of baseline severity of the neurologic deficit and lesion volume. In our opinion, this actually speaks in favor of presented findings. Patients with less baseline neurologic impairment scored higher on SSS, and therefore possible change in SSS score over time was smaller. It is also not surprising that the group with fewer deficits had a smaller lesion volume. Still, the improvement in the more impaired subgroup was associated with NAA/Cr increase over time, implying that no increase in NAA/Cr was observed if there was no need for neurologic recovery.

The distribution of lesion location was the same in both groups. There are some indications that lacunar strokes may have relatively good recovery.<sup>12</sup> Because one can claim that recovery mechanisms may also be different in this type of stroke, we excluded them in the second analysis. It did not change the initial results.

There are few methodologic questions that should be addressed. First, we used ratios to Cr/phosphocreatine. Although the Cr/phosphocreatine resonance was reported to be stable even with changes in energy metabolism,<sup>13</sup> it is not always true. In stroke patients, Cr decreases were described in the ischemic lesion itself,<sup>14</sup> in the homologous contralateral region,<sup>15</sup> and in the region adjacent to the stroke lesion.<sup>16</sup> In our study, in each case, we placed voxels outside the region of



**Fig 2.** A, Correlation between changes in the contralateral NAA/Cr and changes in SSS score over time in the whole group.

B, Longitudinal effects. SSS scores at baseline and follow-up examinations are compared between the NAA/Cr<sub>increase</sub> and NAA/Cr<sub>No Increase</sub> groups, correcting for the ipsilesional change in NAA/Cr. Values are means  $\pm$  SEM. Black circles, contralateral NAA/Cr<sub>increase</sub> group; white circles, contralateral NAA/Cr<sub>No Increase</sub> group.

infarction; they followed into normal-appearing (on T2- and T1-weighted images) brain tissue. Voxels were not positioned in the area directly neighboring infarction or in the homologous contralateral region. Moreover, even when the changes in Cr levels outside the stroke lesion were previously reported, they coexisted together with changes in NAA levels of similar magnitude<sup>16</sup>; therefore, the ratios should not have been affected. More importantly, we believe that a few more reasons justify the use of ratios, especially in the study with longitudinal design. We recognize that although ratio is only a semi-quantitative approximation, it still gives the estimation of metabolite amount while allowing for self-correction for variations in susceptibility, coil loading, tissue composition, and, in particular, changes in the receiver gain. All of the above are of value in a longitudinal study.

Second, the use of a single-voxel method merits some explanation. One of the reasons to use single-voxel method in this study was time limitation. The total additional time of spectroscopic examination was only approximately 7 minutes. During follow-up examination (when patients' neurologic status generally improved) this was not of major importance; in the subacute phase of stroke, because of restricted mobility, pain, and sometimes also medical complications, patients' tolerance for staying in the scanner was limited. Third, we examined PFR; voxels were located near frontal sinuses. This localization can be sometimes challenging because of local magnetic field inhomogeneities. Smaller voxels made shimming more efficient.

Although no segmentation was done with respect to the white and gray matter content, we positioned the voxels in the same way in every case within the SFG. We used short echo time of 35 ms. Although it made our spectra more "crowded,"

it also allowed us to obtain higher signal intensity from both N-acetylaspartate and creatine and higher signal-to-noise ratio.

Finally, we did not have longitudinal data on the control group. However, assuming that in the control group the examinations of left and right homologous brain regions can be seen as 2 separate measurements of the similar anatomic structure, we found NAA/Cr ratios reproducible. Therefore, any differences in standard deviation in the patients group should be attributed to the biologic effect rather than technique-related variability.

## Conclusions

Poststroke recovery was related to the increase in contralateral prefrontal NAA/Cr. The change in contralateral NAA/Cr positively correlated with neurologic improvement measured with SSS. Overall, this association may reflect compensatory mechanisms involving the PFR in the "spared" hemisphere. Assessment of these regions over the period crucial for recovery may provide information about the mechanisms contributing to improvement. Further studies with more precise quantification of metabolite concentration are warranted.

## Acknowledgments

We thank Oded Gonen, PhD for his helpful suggestions and Justyna Kozub, MSc, and Kenneth E. Rich, MD, for the critical revision of the paper.



## References

1. Seitz RJ, Binkofsky F, Freund H-J. **Motor dysfunction recovery.** In: Bogouslavsky J, ed. *Long-Term Effects of Stroke* New York: Marcel Dekker; 2002:105–48
2. Nelles G, Spiekermann G, Jueptner M, et al. **Reorganization of sensory and motor systems in hemiplegic patients. A positron tomography study.** *Stroke* 1999;30:1510–16
3. Cao Y, D'Olhaberriague L, Vikongstad EM, et al. **Pilot study of functional MRI to assess cerebral activation of motor function after poststroke hemiparesis.** *Stroke* 1998;29:112–22
4. Kobayashi M, Takayama H, Suga S, et al. **Longitudinal changes in frontal lobes after hemorrhagic stroke of basal ganglia: a proton magnetic resonance spectroscopy study.** *Stroke* 2001;32:2237–44
5. Barker PB. **N-acetylaspartate a neuronal marker?** *Ann Neurol* 2001;49:423–24
6. Bamford J, Sandercock P, Dennis M, et al. **Classification and natural history of clinically identifiable subtypes of cerebral infarction.** *Lancet* 1991; 337:1521–26
7. Scandinavian Stroke Study Group. **Multicenter trial of hemodilution in ischemic stroke—background and study protocol.** *Stroke* 1985;16, 885–90
8. Pantano P, Caramia F, Bozzao L, et al. **Increase in infarct volume after cerebral ischemia: correlations with thrombolytic treatment and clinical outcome.** *Stroke* 1999;30:502–07
9. Lloyd D. **Terra cognita: from functional neuroimaging to the map of the mind.** Available at <http://www.trincoll.edu/dlloyd/terra.html>. Accessed Sep 8, 2005.
10. Lehericy S, Gerardin E, Poline JB, et al. **Motor execution and imagination networks in post-stroke dystonia.** *Neuroreport* 2004;15:1887–90. d
11. Marshall RS, Perera GM, Lazar RM, et al. **Evolution of cortical activation during recovery from corticospinal tract infarction.** *Stroke* 2000;31:656–61
12. Hendricks H, van Limbeek J, Geurts AC at al. **Motor recovery after stroke: A systematic review of the literature.** *Arch Phys Med Rehabil* 2002;83:1629–37
13. Sappey-Marini D, Calbrese G, Hetherington HP, et al. **Proton magnetic resonance spectroscopy of human brain: applications to normal white matter, chronic infarction, and MRI white matter signal hyperintensities.** *Mag Res Med* 1992;26:313–27
14. Federico F, Simone IL, Lucivero V, et al. **Prognostic value of proton magnetic resonance spectroscopy in ischemic stroke.** *Arch Neurol* 1998;55:489–94
15. Mathews VP, Barker PB, Blackband SJ, et al. **R. Cerebral metabolites in patients with acute and subacute strokes: concentrations determined by quantitative proton MR spectroscopy.** *AJR Am J Roentgenol* 1995;165:633–38
16. Labelle M, Khiat A, Durocher A, et al. **Comparison of metabolite levels and water diffusion between cortical and subcortical strokes as monitored by MRI and MRS.** *Invest Radiol* 2001;36:155–63