



## Get Clarity On Generics

Cost-Effective CT & MRI Contrast Agents

**FRESENIUS  
KABI**

[WATCH VIDEO](#)

# AJNR

This information is current as  
of August 29, 2025.

## **The Combined Performance of ADC, CSF CXC Chemokine Ligand 13, and CSF Interleukin 10 in the Diagnosis of Central Nervous System Lymphoma**

M.C. Mabray, R.F. Barajas, J.E. Villanueva-Meyer, C.A.  
Zhang, F.E. Valles, J.L. Rubenstein and S. Cha

*AJNR Am J Neuroradiol* 2016, 37 (1) 74-79

doi: <https://doi.org/10.3174/ajnr.A4450>

<http://www.ajnr.org/content/37/1/74>

# The Combined Performance of ADC, CSF CXCL Chemokine Ligand 13, and CSF Interleukin 10 in the Diagnosis of Central Nervous System Lymphoma

M.C. Mabray, R.F. Barajas, J.E. Villanueva-Meyer, C.A. Zhang, F.E. Valles, J.L. Rubenstein, and S. Cha



## ABSTRACT

**BACKGROUND AND PURPOSE:** CXCL chemokine ligand 13 and interleukin 10 have emerged as CSF biomarkers for the diagnosis of CNS lymphoma. Our hypothesis is that the combined use of ADC, CXCL chemokine ligand 13, and interleukin 10 will result in increased diagnostic performance compared with the use of ADC values alone.

**MATERIALS AND METHODS:** Eighty-seven patients were included in this study, including 43 with CNS lymphoma and 44 without CNS lymphoma (21 metastases, 14 high-grade gliomas, 9 tumefactive demyelinating lesions) who had undergone CSF proteomic analysis and had a new enhancing mass on brain MR imaging. Average ADC was derived by contouring the contrast-enhancing tumor volume. Group means were compared via *t* tests for average ADC, CXCL chemokine ligand 13, and interleukin 10. Receiver operating characteristic analysis was performed for each individual variable. Multiple-variable logistic regression with receiver operating characteristic analysis was performed, and the multiple-variable receiver operating characteristic was compared with single-variable receiver operating characteristics.

**RESULTS:** The average ADC was lower and CSF CXCL chemokine ligand 13 and interleukin 10 values were higher in CNS lymphoma ( $P < .001$ ). Areas under the curve ranged from 0.739 to 0.832 for single-variable ROC. Multiple-variable logistic regression yielded statistically significant individual effects for all 3 variables in a combined model. Multiple-variable receiver operating characteristics (area under the curve, 0.928) demonstrated statistically significantly superior diagnostic performance compared with the use of single variables alone.

**CONCLUSIONS:** The combined use of ADC, CSF CXCL chemokine ligand 13, and interleukin 10 results in increased diagnostic performance for the diagnosis of CNS lymphoma. This finding highlights the importance of CSF analysis when the diagnosis of CNS lymphoma is considered on the basis of MR imaging.

**ABBREVIATIONS:** ADCavg = average ADC; CNSL = central nervous system lymphoma; CXCL-13 = CXCL chemokine ligand 13; IL-10 = interleukin 10; ROC = receiver operating characteristic; AUC = area under the curve

Central nervous system lymphoma (CNSL) may be primary CNSL when isolated to the central nervous system or secondary CNSL in the setting of systemic lymphoma.<sup>1–3</sup> Patients who

are immunocompromised are at an increased risk of developing CNSL (primary or secondary); however, the rates of primary CNSL are increasing among immunocompetent patients.<sup>4–8</sup> CNSL now accounts for approximately 1%–5% of all brain tumors and thus should be considered in the differential diagnosis of a patient with a new brain mass lesion.<sup>4,6,7</sup>

Arriving at a consistently accurate preoperative diagnosis for a patient with a brain mass lesion encountered on MR imaging remains an overall difficult task.<sup>9</sup> There is considerable overlap in the clinical presentation and appearance of brain mass lesions on MR imaging, including CNSL, and there is much research into using advanced imaging techniques to arrive at a diagnosis.<sup>9–13</sup> Ultimately, most patients with a newly encountered brain mass lesion will undergo stereotactic brain biopsy to arrive at a diagnosis, an invasive procedure with a rate of diagnostic failure that may be as high as 35%.<sup>14,15</sup> The diagnosis of CNSL may be further complicated by its response to glucocorticoids, which may com-

Received February 26, 2015; accepted after revision May 12.

From the Departments of Radiology and Biomedical Imaging (M.C.M., R.F.B., J.E.V.-M., C.A.Z., F.E.V., S.C.), Medicine Division of Hematology/Oncology (J.L.R.), Epidemiology and Biostatistics (C.A.Z.), and Neurological Surgery (S.C.), University of California San Francisco, San Francisco, California.

M.C.M. and R.F.B. contributed equally to this study and are considered co-first authors. J.L.R. and S.C. contributed equally to this study and are considered co-senior authors.

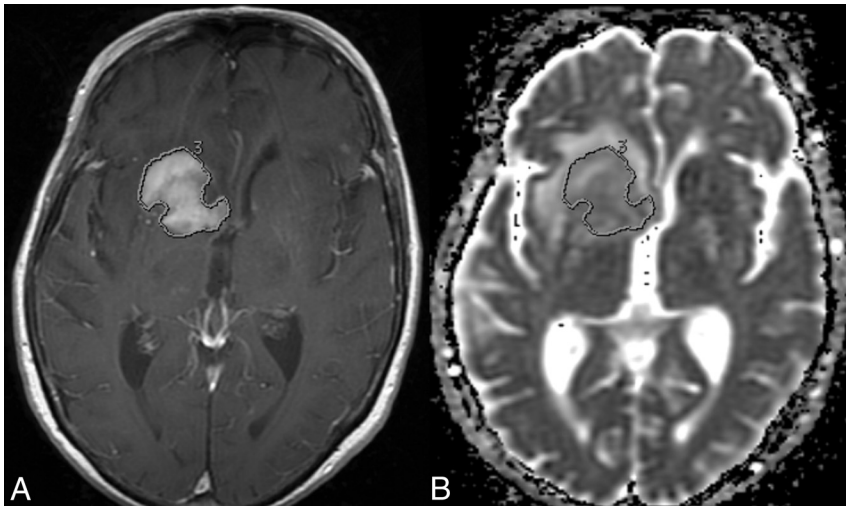
M.C.M. and R.F.B. were supported by a National Institutes of Health T32 training grant (5T32EB001631–10).

Paper previously presented at: Annual Meeting of the Radiological Society of North America, November 30 to December 5, 2014; Chicago, Illinois.

Please address correspondence to Marc C. Mabray, MD, Radiology and Biomedical Imaging, 505 Parnassus Ave, M391, University of California, San Francisco, San Francisco, CA 94143; e-mail: marc.mabray@ucsf.edu, marccm7@gmail.com

Indicates open access to non-subscribers at www.ajnr.org

<http://dx.doi.org/10.3174/ajnr.A4450>



**FIG 1.** An axial postgadolinium T1-weighted MR image (A) and a coregistered axial ADC map (B) demonstrate manual contouring of the contrast-enhancing CNSL on this section, which allows the measurement of ADCavg. This is performed on every section of the contrast-enhancing tumor.

plicate diagnosis by both MR imaging and stereotactic biopsy.<sup>16,17</sup> Ideally, an accurate diagnosis of a new brain mass lesion could be offered before brain biopsy to facilitate treatment planning and surgical triage, and potentially even obviate biopsy in some cases.

Multiple MR imaging features have been reported useful for distinguishing CNSL from the more common high-grade glioma, including relatively low ADC values on DWI, relatively low cerebral blood volume and high permeability on MR perfusion, lipid peaks and high choline-to-creatinine ratios on MR spectroscopy, and the absence of foci of susceptibility on high-resolution susceptibility imaging.<sup>10-13,18,19</sup> ADC derived from DWI is of particular interest because this sequence is routinely performed on all brain MRI. Low ADC values in CNSL are related to high cellularity, which theoretically interferes with the diffusion of water within the tumor.<sup>20,21</sup> These MR imaging findings may be helpful but are also present in numerous other conditions and are ultimately nonspecific.

CXC chemokine ligand 13 (CXCL-13), a mediator of B-cell migration, and interleukin 10 (IL-10), an anti-inflammatory cytokine, are produced by lymphocytes in CNSL, can be detected in the CSF, and have emerged as CSF biomarkers for the diagnosis of CNSL.<sup>22-25</sup> These CSF biomarkers should be considered in the evaluation of a brain mass detected on MR imaging. The aim of our study was to investigate the performance of the combined use of ADC derived from the preoperative clinical MR imaging and CSF CXCL-13 and IL-10 concentrations for the diagnosis of CNSL. Our hypothesis is that the combined use of ADC, CSF CXCL-13, and CSF IL-10 will result in increased diagnostic performance compared with the diagnostic performance of ADC values alone.

## MATERIALS AND METHODS

### Study Subjects

Eighty-seven patients were included in this cohort study compliant with the institutional review board and Health Insurance Portability and Accountability Act. We performed a retrospective review of a prospectively built cohort data base of patients who had

undergone CSF sampling from 2003 to 2011 at our institution as part of a multi-institutional study.<sup>22,24</sup> We cross-referenced this data base with MR imaging. Inclusion criteria for our study were CSF sampling with CXCL-13 and IL-10 and a preoperative brain MR imaging showing an enhancing mass lesion. Exclusion criteria were age younger than 12 years, traumatic CSF collection, or therapeutic intervention within 3 weeks. Eighty-seven patients were included in this study, including 43 with CNSL (38 primary CNSL, 5 secondary CNSL) and 44 without CNSL (21 metastases, 14 high-grade gliomas, 9 tumefactive demyelinating lesions). All diagnoses were pathologically confirmed following surgical biopsy. None of the patients were HIV-positive. The medical record was retrospectively reviewed to determine whether patients received

corticosteroids before CSF sampling.

### CSF Proteomic Analysis

These methods have been previously described.<sup>22,24</sup> Briefly, CSF samples were frozen within 2 hours of collection and stored at  $-70^{\circ}\text{C}$  until analysis, at which point they were thawed and CSF concentrations of CXCL-13 and IL-10 were determined in duplicate by using an enzyme-linked immunoabsorbent assay. All CSF CXCL-13 and IL-10 concentrations are reported in picograms per milliliter.

### MR Imaging and ADC Measurements

Standard clinical MR imaging was performed at 1.5T ( $n = 68$ ) or 3T ( $n = 19$ ). Axial DWI (TR/TE, 10,000/99 ms; section thickness/intersection gap, 5/0 mm; matrix size,  $256 \times 256$ ; FOV,  $24 \text{ cm} \times 24 \text{ cm}$ ; 3 orthogonal diffusion gradient directions; b-values, 0 and  $1000 \text{ s/mm}^2$ ) was performed in the transverse plane covering the whole brain. Contrast-enhanced 3D spoiled gradient-recalled T1-weighted imaging (TR/TE, 34/8 ms; section thickness/intersection gap, 1.5/0 mm) was performed in the axial plane. Slight variations in the scanning protocol were allowed as changes were made in the departmental protocol with time, as long as the patients had diffusion-weighted imaging performed at  $b=0$  and  $1000 \text{ s/mm}^2$ .

All MR images were initially reviewed on the clinical PACS. We performed additional image processing and analysis in a blinded fashion off-line from the clinical PACS workstation using the FuncTool application (Version 9.4.05a; GE Healthcare, Milwaukee, Wisconsin) of an Advantage Workstation (Version 4.5; GE Healthcare). ADC maps were constructed from the diffusion-weighted images and coregistered to the postcontrast T1-weighted images. Each lesion was manually segmented on each section of the ADC map by contouring the contrast-enhancing lesion on the postcontrast T1-weighted images (Fig 1) by using established methods.<sup>21,26</sup> Manual adjustments were made on the ADC map if there was any misregistration. Average ADC (ADCavg) was calculated for each lesion volume in units of  $10^{-6} \text{ mm}^2/\text{s}$  (all ADC values in this article are reported in units of  $10^{-6} \text{ mm}^2/\text{s}$ ). All ROIs were performed by a neuroradiology trainee

(R.F.B.) and secondarily approved by an attending neuroradiologist (S.C.) certified by the American Board of Radiology with a Certificate of Added Qualification in neuroradiology.

### Statistical Analysis

Statistical analysis and line art production were performed by using MedCalc for Windows, Version 14.8.1 (MedCalc Software, Mariakerke, Belgium) and the R statistical computing software

**Table 1: Patient characteristics<sup>a</sup>**

	Overall (n = 87)	CNSL (n = 43)	Non-CNSL (n = 44)
Mean age (yr) (SD)	56.03 (16.97)	61.84 (15.20)	49.95 (16.57)
Age range (yr)	15–85	24–84	15–85
Male/female ratio	43:44	20:23	23:21

<sup>a</sup> The patients with CNSL were statistically significantly older than the patients without CNSL ( $P = .001$ ).

**Table 2: Variables for the CNSL and non-CNSL groups with  $P$  values<sup>a</sup>**

Factor	Variable Means by Patient Group		$P$ Value
	CNSL (n = 43)	Non-CNSL (n = 44)	
ADCavg	864.81	1071.65	<.001
95% CI	(832.50–897.13)	(981.23–1162.04)	
CXCL-13	2960.49	72.54	<.001
95% CI	(1124.96–4796.01)	(9.02–136.05)	
IL-10	557.48	5.93	<.001
95% CI	(167.49–947.47)	(3.42–8.43)	

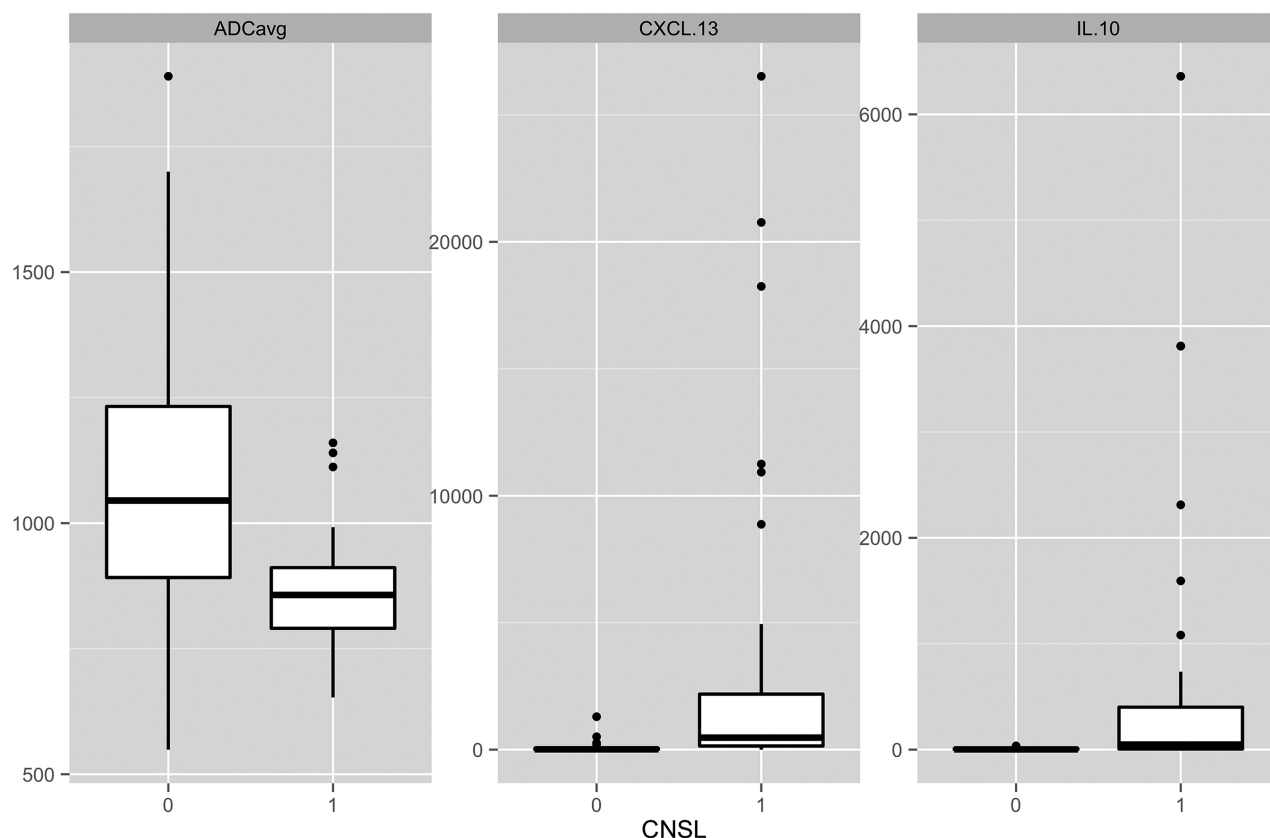
<sup>a</sup> The patients with CNSL had lower ADC values and higher CSF CXCL-13 and IL-10 values than those without CNSL.

(<http://www.r-project.org>). The mean and SD of age were calculated for all patients and for the 2 patient groups, which were compared with a Welch 2-tailed  $t$  test. Corticosteroid administration was compared between the 2 patient groups with a Fisher exact test. Mean and 95% confidence intervals for the CNSL and non-CNSL groups were calculated for ADCavg, CXCL-13, and IL-10, and means were compared with Welch 2-tailed  $t$  tests. Single-variable receiver operating characteristic (ROC) analysis was then conducted for each variable for the diagnosis of CNSL. Multiple-variable logistic regression with ROC was then performed for the identification of CNSL by using the predictive variables ADCavg, CXCL-13, and IL-10. Optimized sensitivities and specificities were identified by using the maximum Youden J Index (maximum vertical distance to the null hypothesis AUC = 0.5 line or sensitivity [1-specificity]). Additionally, thresholds required for 95% specificity were calculated along with the sensitivity at this threshold. Pair-wise comparisons of the multiple-variable ROC curve AUCs were made to the single-variable ROC curves by using the ROC compare function of MedCalc, which uses the method of Delong et al,<sup>27</sup> accounting for correlated variables. A two-tailed  $P < .05$  was considered statistically significant.

## RESULTS

### Patient Characteristics

Patient characteristics are reported in Table 1. The CNSL group (mean age, 61.84 years) was statistically significantly older than the non-CNSL group (mean age, 49.95 years) ( $P = .001$ ). Corticosteroid administration information before CSF sampling was



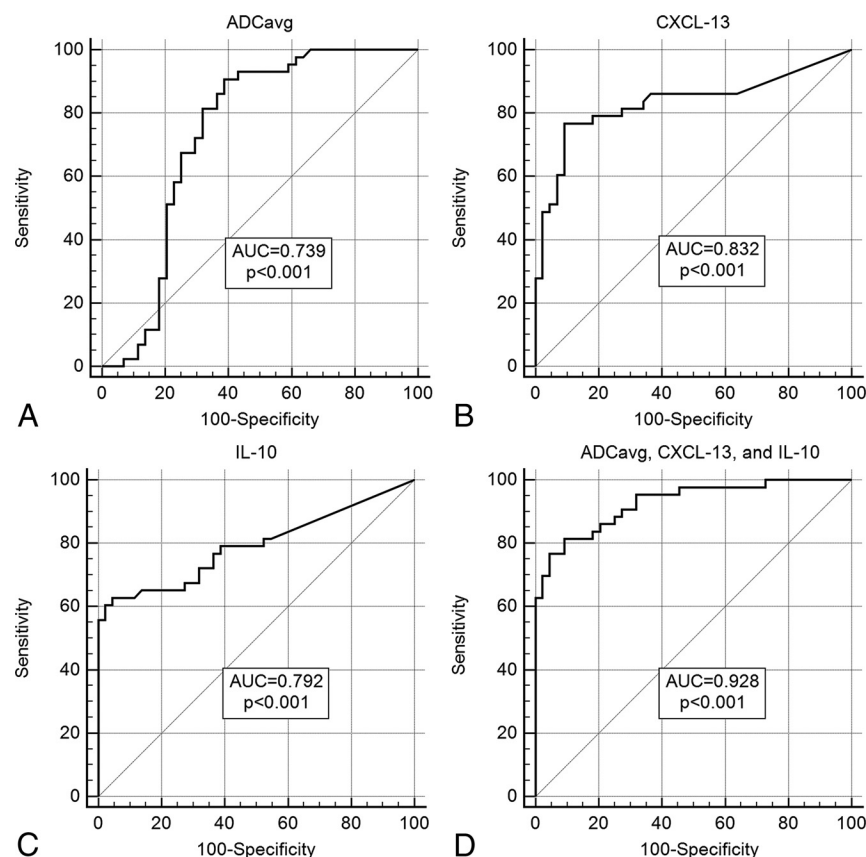
**FIG 2.** Boxplots of ADCavg, CSF CXCL-13, and CSF IL-10. ADCavg is statistically significantly lower, and CSF CXCL-13 and IL-10 are statistically significantly higher in patients with CNSL ( $P < .001$ ).

**Table 3: Results of individual and multiple-variable ROCs for the diagnosis of CNSL<sup>a</sup>**

Factor and <i>P</i> Value	ROC Results with Optimized Thresholds				
	AUC (95% CI)	Maximum Youden Index <i>J</i>	Threshold Sensitivity/Specificity	Threshold ± Likelihood Ratios	Threshold PPV/NPV
ADCavg ( <i>P</i> < .001)	0.739 (0.634–0.827)	0.521 at ≤971	90.70/61.36	2.35/0.15	69.64/87.10
CXCL-13 ( <i>P</i> < .001)	0.832 (0.737–0.904)	0.677 at <106.0	76.74/90.91	8.44/0.26	89.19/80.00
IL-10 ( <i>P</i> < .001)	0.792 (0.692–0.872)	0.583 at >21.77	62.79/95.45	13.81/0.39	93.10/72.41
ADCavg, CXCL-13, IL-10 ( <i>P</i> < .001)	0.928 (0.851–0.972)	0.723 at probability of >0.527	81.40/90.91	11.26/0.25	89.74/83.33

**Note:**—NPV indicates negative predictive value; PPV, positive predictive value.

<sup>a</sup> All ROC curves were statistically significant. Optimized thresholds were selected by using the maximum Youden Index *J*, the maximum vertical distance from the AUC = 0.5 null hypothesis line (sensitivity [1-specificity]). PPV and NPV should be interpreted with caution because they are highly dependent on the prevalence of the disease in the tested population, and as CSF testing becomes more common, this may not be reflective of our study population.



**FIG 3.** ROC curves of ADCavg (A), CXCL-13 (B), IL-10 (C), and ADCavg with CXCL-13 and IL-10 (D). All ROCs are statistically significant (*P* < .001). Diagnostic performance measured by AUC is statistically significantly superior in the multiple-variable model (D) compared with the single-variable models (A–C).

retrospectively available for 64/87 patients (30/43 patients with CNSL and 34/44 without it). More patients with CNSL were confirmed to have received corticosteroids (*n* = 24) before CSF sampling than those in the non-CNSL group (*n* = 14, *P* = .005). The corticosteroid administered was dexamethasone in 22 and hydrocortisone in 2 of the patients with CNSL and dexamethasone in 11, methylprednisolone in 2, and prednisone in 1 of the patients without CNSL.

#### ADCavg and CSF Values by Group

ADCavg, CSF CXCL-13, and CSF IL-10 values are reported in Table 2 and depicted in Fig 2. ADCavg was statistically significantly lower and CSF CXCL-13 and IL-10 values were higher in CNSL than in non-CNSL (*P* < .001).

#### Single-Variable ROC for the Identification of CNSL

ROC curves for all 3 variables analyzed were statistically significant for the identification of CNSL (*P* < .001). Results with AUC and optimized thresholds with the maximum Youden Index *J*, sensitivities, specificities, likelihood ratios, and predictive values are reported in Table 3 and depicted in Fig 3. AUCs ranged from 0.739 (ADCavg) to 0.832 (CXCL-13), and maximum Youden Index *J* values ranged from 0.521 (ADCavg) to 0.677 (CXCL-13). Threshold values for 95% specificity with associated sensitivity are reported in Table 4. Sensitivity at 95% specificity ranged from 0.00% (ADCavg, ≤598.2) to 62.79% (IL-10 > 20.65).

#### Multiple Variable Logistic Regression for the Identification of CNSL

The results of multiple-variable logistic regression are presented in Table 5. The model was overall statistically significant (*P* < .001), and the 3 individual variables were each individually statistically significant. The logistic regression equation can be represented as: probability of CNSL =  $1/[1 + e^{(2.617 - 0.0048(\text{ADCavg}) + 0.0024(\text{CXCL-13}) + 0.0626(\text{IL-10}))}]$ . The multiple-variable ROC results are presented in Table 3, and the curve is depicted in Fig 3.

The AUC was 0.928, and the maximum Youden Index *J* was 0.723, with sensitivity and specificity of 81.40% and 90.91% at a probability threshold of >0.527. Results at set 95% specificity are reported in Table 4. Sensitivity at set 95% specificity was 76.74 at a probability threshold of >.639.

#### ROC Comparisons

Results of ROC curve comparisons are reported in Table 6. The multiple-variable ROC demonstrated statistically significantly better diagnostic performance than the single-variable AUCs.

#### DISCUSSION

While the diagnosis of CNSL can be suggested on the basis of MR imaging findings, arriving at a consistently accurate preoperative



diagnosis for a patient with a brain mass lesion encountered on MR imaging remains an overall difficult task and an active area of research.<sup>9-13,18-20</sup> Considerable advances, however, have been made in the field of CSF proteomics that have yielded 2 CSF biomarkers for CNSL, CXCL-13 and IL-10.<sup>22-25</sup> In this study, we have examined the individual diagnostic performances of ADC, CSF CXCL-13, and IL-10 and the combined diagnostic performances in a multiple-variable model considering ADC, CSF CXCL-13, and CSF IL-10 in cohorts of patients with and without CNSL. We found that the combined use of ADC, CSF CXCL-13, and CSF IL-10 results in a statistically significantly increased diagnostic performance for the diagnosis of CNSL and that each variable has a statistically significant individual effect. CSF CXCL-13 and CSF IL-10 values should be considered when a brain mass with reduced ADC values is encountered and when the diagnosis of CNSL is considered. This study provides the statistical basis for considering all 3 variables in clinical practice. Consideration of these factors could potentially be used in the future to make the diagnosis of CNSL without the need for stereotactic biopsy.

Our study supports the observations in the literature that ADC values are decreased and CSF CXCL-13 and IL-10 values are increased in CNSL, while demonstrating the combined use of these variables in multiple-variable diagnostic models.<sup>9-13,18-26</sup> ADCavg demonstrated a moderate diagnostic performance for CNSL in ROC analysis with an AUC of 0.739 (Fig 3) and was relatively sensitive compared with specificity, with an optimized sensitivity/specificity pair of 90.70/61.36 at a threshold of  $\leq 971$ . CSF CXCL-13 and CSF IL-10 also demonstrated moderate diagnostic performance as previously shown for CNSL in ROC analysis with AUCs of 0.832 for CXCL-13 and 0.792 for IL-10 (Fig 3). In agreement with our prior analysis and the literature, these CSF biomarkers (particularly IL-10) were found to be more specific than sensitive, with optimized sensitivity/specificity pairs of 76.74/90.91 for CXCL-13 (at  $>106$ ) and 62.79/95.45 for IL-10 (at  $>21.77$ ).<sup>22-25</sup>

Our multiple-variable model takes advantage of the different sensitivity/specificity profiles offered by each variable with result-

ing improved and optimized diagnostic performance demonstrated by a statistically significantly larger AUC (0.928) on ROC analysis (Tables 3 and 6). The logistic regression results demonstrated that each of these variables had a statistically significant individual effect in the model and thus contributed to the probability of CNSL after the other variables had been taken into account. Our logistic regression equation can thus be used to calculate the probability of CNSL, given IL-10, CXCL-13, and ADCavg, and demonstrates that higher IL-10 and CXCL-13 values and lower ADC values should increase the diagnostic confidence for CNSL. Conversely, lower CXCL-13 and IL-10 values and higher ADC values should decrease diagnostic confidence for CNSL. These results statistically demonstrate the importance of considering CSF analysis in these patients and not relying solely on the presence of a mass with reduced diffusion in making the diagnosis of CNSL.

Our study contains several important limitations. The size of our study is relatively modest, and it was performed at only 1 institution. Clinical factors such as corticosteroid administration were not controlled, and more of the patients with CNSL received corticosteroids before CSF sampling than the patients without CNSL, the effect of which is unknown. A larger, prospective, multi-institutional study could be considered to further evaluate the results of this study. The quantitative measurement of ADC values as performed in this study may pose a limitation to adoption into clinical workflow; however, we routinely use a similar processing method on the same platform for perfusion analysis. Possible future directions to address this limitation could include evaluating the performance of subjectively "restricted diffusion" with CSF CXCL-13 and IL-10. Our multiple-variable models are limited by the variables that we included. With the CNSL group being older than the non-CNSL group, age could have been added to the model and likely would have had an effect; age was, however, omitted for simplicity in comparison of the ROC curves with the corresponding single-variable ROCs. Likewise, additional imaging features could have also been investigated but were omitted for model simplicity. Furthermore, the predictive model that we present is unlikely to be easily adopted in clinical practice; however, a version of the regression equation could conceivably be combined with automatic lesion segmentation to measure ADC and automated data extraction from the medical record for use in computer-aided diagnosis and decision support in the future. We likely have the computing power to accomplish this automated

**Table 4: Sensitivities and corresponding threshold values from the ROC analysis for a set specificity of 95%<sup>a</sup>**

Factor	Sensitivity at Set 95% Specificity (95% CI)	Threshold Value for 95% Specificity
ADCavg	0.00 (0.00–2.33)	$\leq 598.2$
CXCL-13	51.16 (18.60–79.07)	$> 262.82$
IL-10	62.79 (48.84–79.07)	$> 20.65$
ADCavg, CXCL-13, IL-10	72.09 (55.81–86.05)	Probability of $> .616$

<sup>a</sup> ADCavg alone was essentially unable to reach a specificity of 95% (the sensitivity at the calculated threshold is 0%); however, with the addition of the CSF variables in the combined model, we can reach a specificity of 95% with a sensitivity of 72.09%. The highest sensitivity at 95% specificity is reached in the multiple-variable model.

**Table 5: Results of multiple-variable logistic regression with the ADCavg and CSF CXCL-13 and IL-10<sup>a</sup>**

Model	Overall P	Intercept	ADCavg Effect and (OR)	CXCL-13 Effect and (OR)	IL-10 Effect and (OR)
ADCavg, CXCL-13, IL-10	$< .001$	2.617	–0.0048 $P = .012$ (0.995)	0.0024 $P = .022$ (1.002)	0.0626 $P = .017$ (1.065)

<sup>a</sup> The model was overall statistically significant, and all individual variables were individually statistically significant. This result demonstrates that all 3 variables should be factored into the diagnostic confidence that a lesion is a CNSL.

**Table 6: Comparisons of the multiple-variable ROC with the single-variable ROCs<sup>a</sup>**

Model	ADCavg	CXCL-13	IL-10
ADCavg, CXCL-13, IL-10	$P < .001$	$P = .016$	$P = .002$

<sup>a</sup> The multiple-variable ROC demonstrated a statistically significantly larger AUC than the corresponding single-variable AUCs, signifying statistically significantly superior diagnostic performance.

analysis, though these features are not currently incorporated into clinical PACS workstations.

## CONCLUSIONS

In this study, we have demonstrated that the combined use of ADC, CSF CXCL-13, and CSF IL-10 results in statistically significantly increased diagnostic performance for the diagnosis of CNSL compared with the diagnostic performance of ADC alone. Our multiple-variable diagnostic model demonstrated excellent diagnostic performance (AUC of 0.928 and optimized sensitivity/specificity of 81.40/90.91), which was statistically significantly superior to the diagnostic performance of the individual variable models. Within this multiple-variable model, we found statistically significant individual effects for ADC<sub>avg</sub> (OR, 0.995;  $P = .012$ ), CXCL-13 (OR, 1.002;  $P = .022$ ), and IL-10 (OR, 1.065;  $P = .017$ ) demonstrating that each variable contributed individually to the probability of CNSL. This study statistically demonstrates the importance of corroborating with CSF CXCL-13 and CSF IL-10 values (or suggesting they be obtained) when a brain mass with reduced ADC values is encountered and when the diagnosis of CNSL is considered. Higher CXCL-13 and IL-10 values and lower ADC values should all individually increase the diagnostic confidence that a lesion is a CNSL. A combined diagnostic model incorporating ADC<sub>avg</sub>, CSF CXCL-13, and CSF IL-10 could potentially be used in the future to make the diagnosis of CNSL without the need for stereotactic biopsy.

Disclosures: Marc C. Mabray—**RELATED: Grant:** National Institutes of Health, **Comments:** Supported by National Institutes of Health T32 Grant while working on this project. Francisco E. Valles—**RELATED: Grant:** University of California, San Francisco Doris Duke Charitable Foundation Clinical Research Fellowship (Independent Cancer Research Foundation).

## REFERENCES

- Ferreri AJ. Risk of CNS dissemination in extranodal lymphomas. *Lancet Oncol* 2014;15:e159–169 CrossRef Medline
- Hochberg FH, Baehring JM, Hochberg EP. Primary CNS lymphoma. *Nat Clin Pract Neurol* 2007;3:24–35 CrossRef Medline
- van Besien K, Gisselbrecht C, Pfreundschuh M, et al. Secondary lymphomas of the central nervous system: risk, prophylaxis and treatment. *Leuk Lymphoma* 2008;49(suppl 1):52–58 CrossRef Medline
- van der Sanden GA, Schouten LJ, van Dijk JA, et al; Working Group of Specialists in Neuro-Oncology in the Southern and Eastern Netherlands. Primary central nervous system lymphomas: incidence and survival in the Southern and Eastern Netherlands. *Cancer* 2002;94:1548–56 CrossRef Medline
- Besson C, Goubar A, Gabarre J, et al. Changes in AIDS-related lymphoma since the era of highly active antiretroviral therapy. *Blood* 2001;98:2339–44 CrossRef Medline
- Haldorsen IS, Krossnes BK, Aarseth JH, et al. Increasing incidence and continued dismal outcome of primary central nervous system lymphoma in Norway 1989–2003: time trends in a 15-year national survey. *Cancer* 2007;110:1803–14 CrossRef Medline
- Olson JE, Janney CA, Rao RD, et al. The continuing increase in the incidence of primary central nervous system non-Hodgkin lymphoma: a surveillance, epidemiology, and end results analysis. *Cancer* 2002;95:1504–10 CrossRef Medline
- Coté TR, Manns A, Hardy CR, et al. Epidemiology of brain lymphoma among people with or without acquired immunodeficiency syndrome: AIDS/Cancer Study Group. *J Natl Cancer Inst* 1996;88:675–79 CrossRef Medline
- Cha S. Update on brain tumor imaging: from anatomy to physiology. *AJNR Am J Neuroradiol* 2006;27:475–87 Medline
- Kickingereder P, Sahm F, Wiestler B, et al. Evaluation of microvascular permeability with dynamic contrast-enhanced MRI for the differentiation of primary CNS lymphoma and glioblastoma: radiologic-pathologic correlation. *AJNR Am J Neuroradiol* 2014;35:1503–08 CrossRef Medline
- Zacharia TT, Law M, Naidich TP, et al. Central nervous system lymphoma characterization by diffusion-weighted imaging and MR spectroscopy. *J Neuroimaging* 2008;18:411–17 CrossRef Medline
- Haldorsen IS, Espeland A, Larsson EM. Central nervous system lymphoma: characteristic findings on traditional and advanced imaging. *AJNR Am J Neuroradiol* 2011;32:984–92 CrossRef Medline
- Kickingereder P, Wiestler B, Sahm F, et al. Primary central nervous system lymphoma and atypical glioblastoma: multiparametric differentiation by using diffusion-, perfusion-, and susceptibility-weighted MR imaging. *Radiology* 2014;272:843–50 CrossRef Medline
- Josephson SA, Papanastassiou AM, Berger MS, et al. The diagnostic utility of brain biopsy procedures in patients with rapidly deteriorating neurological conditions or dementia. *J Neurosurg* 2007;106:72–75 CrossRef Medline
- Hall WA. The safety and efficacy of stereotactic biopsy for intracranial lesions. *Cancer* 1998;82:1749–55 Medline
- Weller M. Glucocorticoid treatment of primary CNS lymphoma. *J Neurooncol* 1999;43:237–39 CrossRef Medline
- Geppert M, Ostertag CB, Seitz G, et al. Glucocorticoid therapy obscures the diagnosis of cerebral lymphoma. *Acta Neuropathol* 1990;80:629–34 CrossRef Medline
- Calli C, Kitis O, Yuntun N, et al. Perfusion and diffusion MR imaging in enhancing malignant cerebral tumors. *Eur J Radiol* 2006;58:394–403 CrossRef Medline
- Horger M, Fenchel M, Nägele T, et al. Water diffusivity: comparison of primary CNS lymphoma and astrocytic tumor infiltrating the corpus callosum. *AJR Am J Roentgenol* 2009;193:1384–87 CrossRef Medline
- Guo AC, Cummings TJ, Dash RC, et al. Lymphomas and high-grade astrocytomas: comparison of water diffusibility and histologic characteristics. *Radiology* 2002;224:177–83 CrossRef Medline
- Barajas RF Jr, Rubenstein JL, Chang JS, et al. Diffusion-weighted MR imaging derived apparent diffusion coefficient is predictive of clinical outcome in primary central nervous system lymphoma. *AJNR Am J Neuroradiol* 2010;31:60–66 CrossRef Medline
- Roy S, Josephson SA, Fridlyand J, et al. Protein biomarker identification in the CSF of patients with CNS lymphoma. *J Clin Oncol* 2008;26:96–105 CrossRef Medline
- Sasagawa Y, Akai T, Tachibana O, et al. Diagnostic value of interleukin-10 in cerebrospinal fluid for diffuse large B-cell lymphoma of the central nervous system. *J Neurooncol* 2015;121:177–83 CrossRef Medline
- Rubenstein JL, Wong VS, Kadoch C, et al. CXCL13 plus interleukin 10 is highly specific for the diagnosis of CNS lymphoma. *Blood* 2013;121:4740–48 CrossRef Medline
- Sasayama T, Nakamizo S, Nishihara M, et al. Cerebrospinal fluid interleukin-10 is a potentially useful biomarker in immunocompetent primary central nervous system lymphoma (PCNSL). *Neuro Oncol* 2012;14:368–80 CrossRef Medline
- Valles FE, Perez-Valles CL, Regalado S, et al. Combined diffusion and perfusion MR imaging as biomarkers of prognosis in immunocompetent patients with primary central nervous system lymphoma. *AJNR Am J Neuroradiol* 2013;34:35–40 CrossRef Medline
- DeLong ER, DeLong DM, Clarke-Pearson DL. Comparing the areas under two or more correlated receiver operating characteristic curves: a nonparametric approach. *Biometrics* 1988;44:837–45 CrossRef Medline