



## Get Clarity On Generics

Cost-Effective CT & MRI Contrast Agents



FRESENIUS  
KABI

WATCH VIDEO

# AJNR

## The cisternal ventricle.

J R Jenkins

*AJNR Am J Neuroradiol* 1988, 9 (1) 111-113

<http://www.ajnr.org/content/9/1/111>

This information is current as  
of August 24, 2025.

# The Cisternal Ventricle

John R. Jenkins<sup>1,2</sup>

**Hydrocephalus communicating with the basilar subarachnoid cisterns may manifest itself as enlargement of these spaces. Confirmation of this finding is based on resolution of dilatation after ventricular shunting. A series of eight patients points out the CT characteristics, the differential diagnosis, and the importance of the cisternal ventricle in the transmission of CSF.**

Various extensions of the cerebral ventricular system have been alluded to in the literature, including the "fifth" and "sixth" ventricles [1-7]. Of great importance is the CSF space interposed between the spinal CSF tract, the subarachnoid spaces over the outer cerebral surfaces, and the CSF domain of the cerebral ventricles. This bridging compartment includes the vallecule, the cisterna magna, and the peribulbar cisterns: they can be considered together as a unit called the cisternal ventricle.

## Subjects and Methods

Eight patients ages newborn to 3 years old with communicating hydrocephalus had CT on initial presentation (Table 1). Five-mm axial sections were obtained through the posterior fossa and 10-mm sections were obtained in the supratentorial region. A GE-9800 CT scanner was used throughout. Clinical signs included restlessness, nausea, and vomiting. Rapid circumferential head enlargement was a consistent observation in the very young. The etiology of the hydrocephalus included congenital-idiopathic causes, neonatal germinal matrix hemorrhage, and bacterial meningitis. The patients were rescanned at varying intervals after ventriculoperitoneal shunting. Resolution of the hydrocephalus in this series required 3 to 8 months.

## Results

The initial CT examination invariably revealed supratentorial ventricular dilatation and mild to moderate enlargement of the fourth ventricle. In addition, associated with this classic appearance of communicating hydrocephalus was expansion of the vallecule, the cisterna magna, and the peribulbar subarachnoid cisterns (Figs. 1 and 2). After successful ventricular shunting, the cerebral ventricles were decompressed, the patients became asymptomatic, and the widened spaces of the cisternal ventricle largely "filled" with surrounding normal neural structures (Figs. 1 and 2). The structures that expanded to fill the CSF void included the cerebellar hemispheres, the vermis, and the brainstem.

## Discussion

It is not surprising that the extracerebral subarachnoid spaces dilate in response to elevated CSF pressures in communicating hydrocephalus. The ventricular, spinal,

Received September 24, 1986; accepted after revision August 9, 1987.

<sup>1</sup> Department of Radiology, Neuroradiology Section, King Faisal Specialist Hospital and Research Centre, Riyadh, Saudi Arabia.

<sup>2</sup> Present address: Huntington Medical Research Institutes, MR Imaging Laboratory, 10 Pico St., Pasadena, CA 91105-3201. Address reprint requests to J. R. Jenkins.

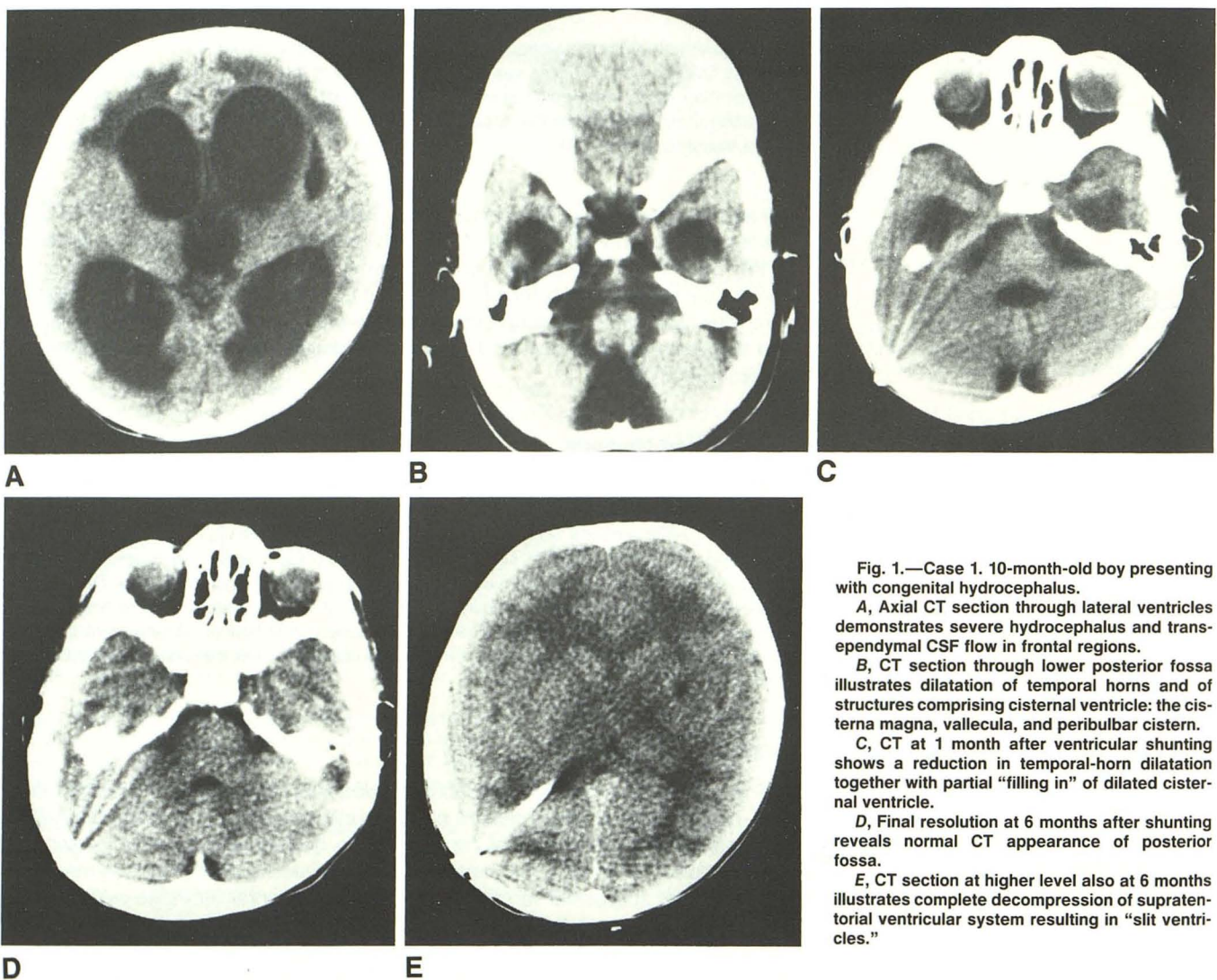
**AJNR 9:111-113, January/February 1988**

0195-6108/88/0901-0111

© American Society of Neuroradiology

TABLE 1: Patients Evaluated with Communicating Hydrocephalus

Age	Gender	Etiology of Hydrocephalus	Dilated Extraventricular Structures				Time to Resolution of Hydrocephalus
			Cisterna Magna	Valeculia	Peribulbar Cistern	Other	
Newborn	M	Congenital	+	+	+	—	6 months
Newborn	M	Meningitis	+	+	+	—	4 months
2 months	M	Congenital	+	+	+	—	3 months
2 months	F	Neonatal Hemorrhage	+	+	+	—	6 months
3 months	M	Neonatal Hemorrhage	+	+	+	—	3 months
10 months	M	Congenital	+	+	+	—	8 months
3 years	F	Congenital	+	+	+	—	4 months
3 years	F	Meningitis	+	+	+	—	5 months



optic, and extraventricular cranial CSF compartments all have the ability to act as individual, yet interconnected, units. As a part of this system, the cisternal ventricle behaves in the same manner, dilating and contracting in balance with the other

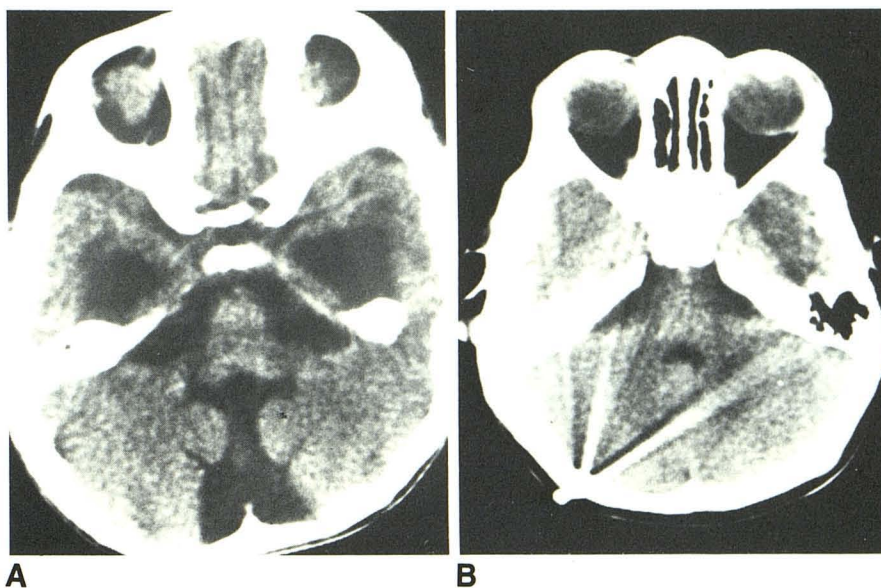
CSF pathways, and it comprises one component of so-called external hydrocephalus. In fact, this "balance" may explain why the fourth ventricle is often not as dilated as are the third and lateral ventricles in patients with communicating hydro-



Fig. 2.—Case 8. 3-year-old girl with communicating hydrocephalus secondary to bacterial meningitis.

A, Initial CT demonstrates dilatation of temporal horns, cisterna magna, vallecule, and perimesencephalic cistern.

B, Subsequent CT at 5 months after ventricular shunting illustrates complete return to normal of temporal horns and posterior fossa structures in conjunction with resolution of hydrocephalus.



cephalus [4, 6]. The fourth ventricle in such cases is simply sharing the potential CSF space of the posterior fossa with the cisternal ventricle.

Further, the dilated cisternal ventricle points out a possible pitfall of CT interpretation. Before shunting, the appearance of the posterior fossa structures might be mistaken for mega cisterna magna, irreversible acquired atrophy, neural hypoplasia, or possibly the Dandy-Walker variant [8–15]. Care must be taken, therefore, in interpreting the appearance of the posterior fossa on CT scans of patients presenting with general CT findings compatible with communicating hydrocephalus. Perhaps a definitive evaluation is best delayed until after ventricular shunting and resolution of the hydrocephalus.

It is apparent, then, that the cisternal ventricle lies at the hub of the CSF pathways, whose radii include all the CSF spaces of the cranium and spine. It acts as a remarkably dynamic structure, capable of significant volume fluctuation in response to changes in pressure gradient between any one or combination of the neuraxis CSF compartments.

## REFERENCES

1. Kansu T, Bertan B. Fifth ventricle with bitemporal hemianopsia. *J Neurosurg* 1980;52:276–278
2. Dandy WE. Congenital cerebral cysts of the cavum septi pellucidi (fifth ventricle) and cavum vergae (sixth ventricle) diagnosis and treatment. *Arch Neurol Psychiatry* 1931;25:44–66
3. Anderson H, Elfverson J, Svendsen P. External hydrocephalus in infants. *Childs Brain* 1984;11:398–402
4. Huckman MS. Normal pressure hydrocephalus: evaluation of diagnostic and prognostic tests. *AJNR* 1981;2:385–395
5. Kendall B, Holland I. Benign communicating hydrocephalus in children. *Neuroradiology* 1981;21:93–96
6. Naidich TP, Schott LH, Baron RL. Computed tomography in evaluation of hydrocephalus. *Radiol Clin North Am* 1982;20:143–167
7. Robertson W Jr, Gomez MR. External hydrocephalus. *Arch Neurol* 1978;35:541–544
8. Archer CR, Darwish H, Smith K. Enlarged cisternae magna and posterior fossa cysts simulating Dandy-Walker syndrome on computed tomography. *Radiology* 1978;127:681–686
9. Groenhout CM, Gooskens RH, Veiga-Pires JS, Ramos L, Willemse J, van Nieuwenhuizen O. Value of sagittal sonography and direct sagittal CT of the Dandy-Walker syndrome. *AJNR* 1984;5:476–477
10. Just NWM, Goldenberg M. Computed tomography of the enlarged cisterna magna. *Radiology* 1979;131:385–391
11. Masdeu JC, Dobben GD, Azar-Kia B. Dandy-Walker syndrome studied by computed tomography and pneumoencephalography. *Radiology* 1983;147:109–114
12. Mercuri S, Curatolo P, Giuffer R, Di Lorenzo N. Agenesis of the veris cerebelli and malformations of the posterior fossa in childhood and adolescence. *Neurochirurgia (Stuttg)* 1979;22:180–188
13. Nova HR. Familial communicating hydrocephalus, posterior cerebellar agenesis, mega cisterna magna, and port-wine nevi. *J Neurosurg* 1979;51:862–865
14. Sarnat HB, Alcalá H. Human cerebellar hypoplasia. *Arch Neurol* 1980;37:300–305
15. Yamamoto Y, Waga S. Asymptomatic Dandy-Walker variant in an adult. *Surg Neurol* 1984;22:241–242