



Get Clarity On Generics

Cost-Effective CT & MRI Contrast Agents



FRESENIUS
KABI

WATCH VIDEO

AJNR

Primary Retropharyngeal Synovial Sarcoma

H. Shi, S. Wang, P. Wang and Q. Yu

AJNR Am J Neuroradiol published online 14 October 2008
<http://www.ajnr.org/content/early/2008/10/14/ajnr.A1333.citation>

This information is current as
of August 11, 2025.

CASE REPORT

Primary Retropharyngeal Synovial Sarcoma

H. Shi
S. Wang
P. Wang
Q. Yu

SUMMARY: Synovial sarcoma is the third most common histologic type of extremity soft tissue sarcoma. However, primary retropharyngeal synovial sarcoma is extremely rare. We present a case of primary retropharyngeal synovial sarcoma in a 60-year-old woman. The radiographic imaging of our present cases was characteristic of a heterogeneously enhancing mass.

Synovial sarcoma, a mesenchymal spindle-cell tumor, arises most commonly in the deep soft tissues of the extremities (especially around the knee), and frequently adjacent to the joints or tendon sheaths. The retropharyngeal space is a rare site for this tumor. We describe a case of synovial sarcoma located in the retropharyngeal space, focusing on the CT imaging findings.

Case Report

Clinical History and Physical Examination Findings

In August 2006, a 60-year-old woman with difficulties in swallowing and nausea for 3 months was referred to our hospital for evaluation. A clinical examination revealed a submucosal bulging of the left posterior pharyngeal wall. The overlying mucosa seemed to be hypervascular but was not ulcerated. There were no pathologic lymph nodes in the neck.

Radiographic Findings

CT scans of the head and neck showed a large, well-circumscribed, solid mass in the left retropharyngeal space, which was isoattenuated to the muscle (Fig 1A). The styloid process was anterolaterally displaced by the mass. After infusion of the contrast material, the mass showed strong heterogeneous enhancement (Fig 1B). The mass displaced the parapharyngeal fat anteriorly, pharyngeal mucosal space medially, and internal carotid artery laterally. A multiplanar reformatted image showed a clearly limited oval mass in the retropharyngeal space extending from the first to the fifth vertebrae (Fig 1C).

Histologic Findings

The patient underwent a left cervicotomy, in which the lesion was enucleated. During surgery, the tumor appeared tan, circumscribed, and adherent to the anterior common vertebral ligament. The gross specimen, measuring $5.0 \times 3.5 \times 6.0$ cm, was encapsulated. The histologic examination revealed a proliferation of oval to spindle-shaped cells arranged in sheets and fascicles (Fig 1D). On immunohistochemical analysis, tumor cells were positive for keratins, vimentin, and epithelial membrane antigen, and negative for S-100, desmin. The histologic diagnosis was monophasic synovial sarcoma.

Two years after initial surgery, the patient is free of disease, without signs of local recurrence and distant metastases, and functioning adequately.

Discussion

Synovial sarcoma is a mesenchymal spindle-cell tumor that displays variable epithelial differentiation including glandular formation and has a specific chromosomal translocation $t(X; 18)(p11; q11)$. Synovial sarcoma accounts for 5% to 10% of soft tissue sarcomas.¹ The reported annual incidence is 2.57 per 100,000.² They are reported from birth to age 89 years but occur mainly between the ages of 15 and 40 years³ and are more common in males. Synovial sarcoma is unrelated to the synovium, and less than 5% of these sarcomas originate within a joint or bursa. More than 80% of these tumors arise in the deep soft tissue of the extremities (especially around the knee), and the tumor frequently arises adjacent to joints or tendon sheaths. Approximately 5% of these tumors arise in the head and neck region; however, any site can be affected.^{4,5} In the case of our patient, the tumor was located within the left suprahyoid portion of the retropharyngeal space.

The most common radiologic finding of primary synovial sarcoma has been described to be a heterogeneously enhancing soft tissue mass, with well-defined margins and without calcifications on CT.⁶ In the case of our patient, the tumor concurred with previous reports.

The retropharyngeal space is a distinct space along the midline of the extracranial portion of the head and neck that extends from the skull base to the upper mediastinum. It is bounded by the middle and deep layers of the deep cervical fascia. Lymph nodes and fat are found in the suprahyoid portion of the retropharyngeal space, whereas only fat is present in the infrahyoid portion. In the case of our patient, the tumor was thought to arise from a retropharyngeal node, probably the lateral group, which is located at the anterolateral aspect of the prevertebral muscle.

Disease processes in the retropharyngeal space are relatively uncommon; however, they assume greater significance because of the proximity of the retropharyngeal space to the airway and because of the inability to examine this space clinically.⁷⁻⁹ The nodal pattern of suprahyoid retropharyngeal space involvement is identified on CT or MR images when the center of the lesion is anterior to the prevertebral musculature, posteromedial to the parapharyngeal space, and medial to the carotid artery. The CT differential diagnosis of retropharyngeal space abnormalities is limited and includes malignant tumors and inflammatory diseases. Malignant tumors account for most abnormalities in the retropharyngeal space mass, and nodal metastases from head and neck squamous cell carcinoma represent the most common form of involvement. Malignant nodal involvement of the suprahyoid retropharyngeal space was diagnosed when unilateral or bilateral discrete

Received August 9, 2008; accepted August 25.

From the Department of Radiology, Ninth People's Hospital, Medical School, Shanghai Jiao Tong University, Shanghai, China.

Please address correspondence to Huimin Shi, Department of Radiology, Ninth People's Hospital, Medical School, Shanghai Jiao Tong University, 639 Zhi Zao Ju Rd, Shanghai, China; e-mail: shihuimin@msn.com

DOI 10.3174/ajnr.A1333

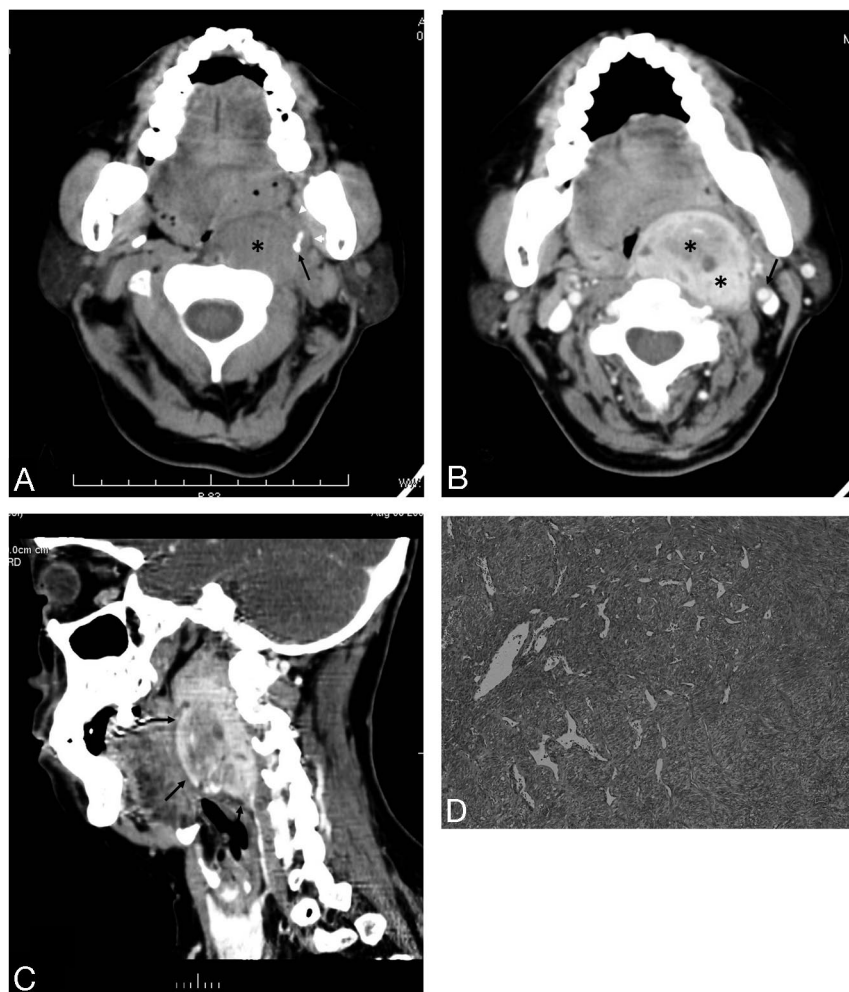


Fig 1. A 60-year-old woman with a bulging mass in the left retropharyngeal space. **A**, Axial CT scan shows a large, well-circumscribed, solid mass in the left retropharyngeal space (black asterisk). The mass displaces the parapharyngeal fat anteriorly (white arrowheads). Note the styloid process, which is anterolaterally displaced by the mass (black arrow). **B**, Contrast-enhanced axial CT scan shows a well-marginated strong heterogeneous enhancement mass in the left retropharyngeal space (black asterisks). The mass displaces the parapharyngeal fat anteriorly, the pharyngeal mucosal space medially, and the internal carotid artery laterally (black arrow). **C**, A multiplanar reformatted image shows a clearly limited oval mass in the retropharyngeal space extending from the first to the fifth vertebrae (black arrows). **D**, Low-power photomicrograph (original magnification, $\times 20$) reveals a proliferation of oval to spindle-shaped cells arranged in sheets and fascicles.

nodal masses of 1 cm or larger were present, or when nodes of any size contained central inhomogeneity on CT scans. Metastatic disease in the retropharyngeal space can result in nodal necrosis.¹⁰ On occasion, nodal necrosis may be confused with an abscess or suppurative lymphadenitis. Necrotic nodes often maintain a clear nodal margin with no signs of surrounding inflammation. Causes of inflammatory diseases in the retropharyngeal space include cellulitis, suppurative adenopathy, and abscess. Except for lipomas, most low-attenuation massive lesions in the retropharyngeal space should be considered large abscesses that will extend rapidly into the lower neck and ultimately to the mediastinum; their existence and extension should be diagnosed correctly and promptly by sectional images.¹¹

In general, synovial sarcoma is treated surgically with or without adjuvant radiation. Up to 50% of synovial sarcomas recur, usually within 2 years.¹² Some 40% metastasize, commonly to the lungs and bone and also to the regional lymph nodes. Prognosis does not differ between monophasic and biphasic tumors or in relationship to immunophenotype.¹³

To the best of our knowledge, only 1 case of retropharyngeal synovial sarcoma has been reported. Radiologists should be familiar with synovial sarcoma in the different sites, and synovial sarcoma should be considered in the differential diagnosis of masses involving the retropharyngeal space.

References

- Kransdorf MJ. Malignant soft tissue tumors in a large referral population: distribution of diagnoses by age, sex, and location. *AJR Am J Roentgenol* 1955;164:129–34
- Scully SP, Temple H, Harrelson J. Synovial sarcoma of the foot and ankle. *Clin Orthop Relat Res* 1999;364:220–26
- Ryan JR, Baker LH, Benjamin RS. The natural history of metastatic synovial sarcoma: Experience of the Southwest Oncology Group. *Clin Orthop Relat Res* 1982;164:257–60
- Argani P, Faria PA, Epstein JI, et al. Primary renal synovial sarcoma: molecular and morphologic delineation of an entity previously included among embryonal sarcomas of the kidney. *Am J Surg Pathol* 2000;24:1087–96
- Fisher C. Synovial sarcoma. *Am Diagn Pathol* 1998;2:401–21
- Duran-Mendicuti A, Costello P, Vargas SO. Primary synovial sarcoma of the chest: radiographic and clinicopathologic correlation. *J Thorac Imaging* 2003;18:87–93
- Nyberg DA, Jeffrey RB, Brant-Zawadzki M, et al. Computed tomography of cervical infection. *J Comput Assist Tomogr* 1985;9:288–96
- Wong YK, Novotny GM. Retropharyngeal space: a review of anatomy, pathology, and clinical presentation. *J Otolaryngol* 1978;7:528–36
- Mancuso AA, Harnsberger HR, Muraki AS, et al. Computed tomography of cervical and retropharyngeal lymph nodes: normal anatomy, variants of normal, and application in staging head and neck cancer. Part II: pathology. *Radiology* 1983;148:715–23
- Chong VF, Fan YF, Khoo JB. Retropharyngeal lymphadenopathy in nasopharyngeal carcinoma. *Eur J Radiol* 1995;21:100–05
- Yokinari K, Tomohiro O. The pharyngeal mucosal, parapharyngeal, and retropharyngeal spaces. *Oral Radiol* 2003;19:106–18
- Fletcher CD, Unni KK, Mertens F, eds. *World Health Organization Classification of Tumours. Pathology and Genetics of Tumours of Soft Tissue and Bone*. Lyon, France: IARC Press; 2002:200–04
- Antonescu CR, Kawai A, Leung DH, et al. Strong association of SYT-SSX fusion type and morphologic epithelial differentiation in synovial sarcoma. *Diagn Mol Pathol* 2000;9:1–8