



Get Clarity On Generics

Cost-Effective CT & MRI Contrast Agents



FRESENIUS
KABI

WATCH VIDEO

AJNR

Erratum

AJNR Am J Neuroradiol published online 17 March 2025
<http://www.ajnr.org/content/early/2025/03/13/ajnr.A8711>

This information is current as
of August 25, 2025.

In the article, “Low-Field Portable MR Imaging to Evaluate Ventricular Volumes: A Single-Center Retrospective Study” published in the August 2024 issue of *AJNR* (2024;45:1076–80; DOI: 10.3174/ajnr.A8269), Figs 1B and 1C were mislabeled. The correct image is shown below. The authors regret the error.

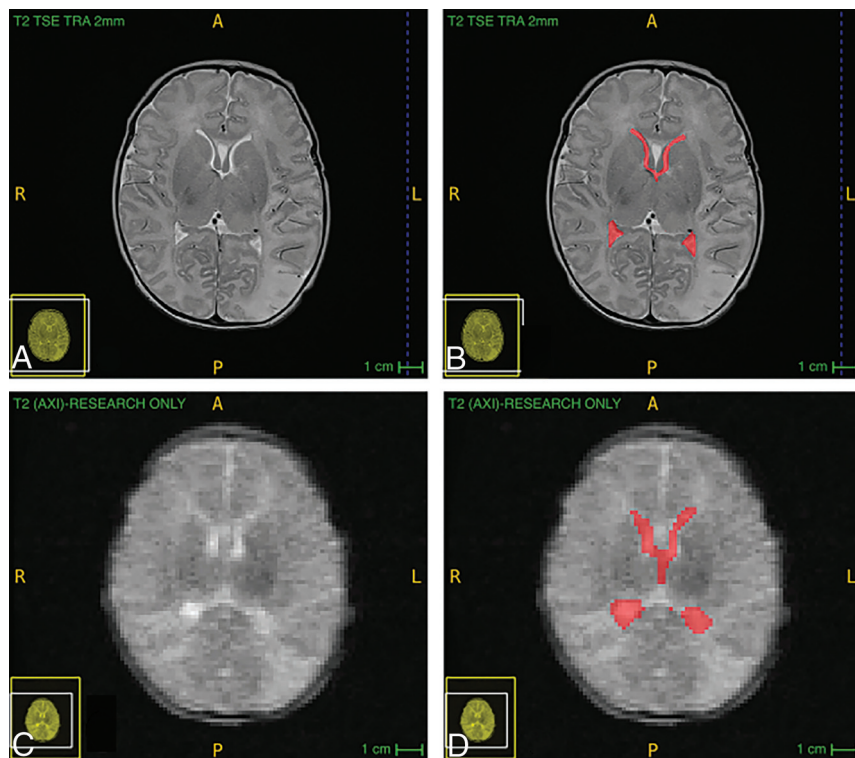


FIG 1. Comparison of SOC and portable clinical MR imaging as well as examples of manual segmentation in 1 participant, a 4-day-old boy without intracranial abnormalities such as ischemia or hemorrhage. Segmentation at 1 level of the lateral ventricles is shown here; SOC (A), SOC with segmentation (B), portable (C), portable with segmentation (D). Hyperfine scans were acquired with software, Version 8.1.0.1. TRA indicates transaxial; TSE, turbo spin echo; AXI, axial; R, right; L, left; P, posterior; A, anterior.

<http://dx.doi.org/10.3174/ajnr.A8711>