

Online supplementary material

Supplementary figure 1:

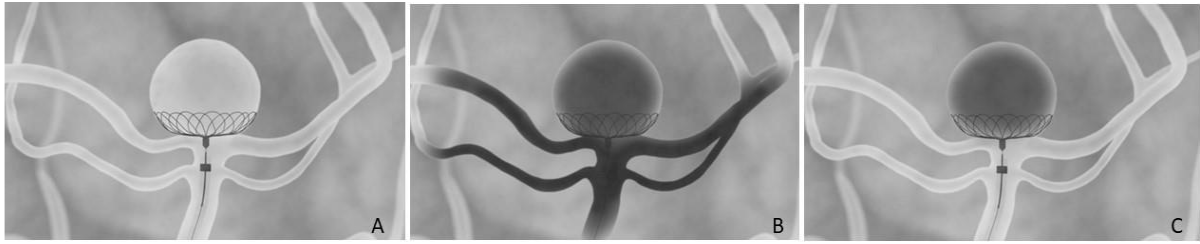


Figure 1: Example of NEQSTENT deployment for treatment of wide neck bifurcation aneurysm. A, graphic example of fluoroscopic image demonstrating device deployment through a microcatheter at the aneurysm neck. B, graphic example of initial angiogram after device deployment. C, graphic example of delayed angiographic appearances after device deployment. This demonstrates the desired flow diversion property of the NEQSTENT device for neck bridging and protection.

Supplementary figure 2:

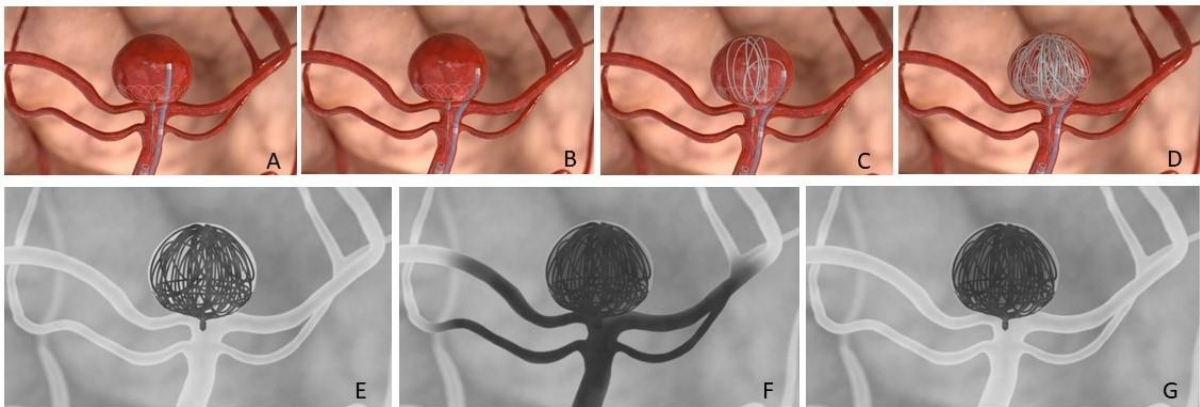


Figure 2: Graphic demonstration of adjunctive coil deployment to aneurysm dome post NEQSTENT deployment. A, example of coiling microcatheter passing through the device mesh for aneurysm dome coil deployment. B, example of a jailed coiling microcatheter adjacent to the NEQSTENT device and aneurysm dome wall for coil deployment. C, example of initial coil deployment into aneurysm dome with NEQSTENT in situ along aneurysm neck. D, E, 3D and angiographic example of complete aneurysm appearance post NEQSTENT and adjunct coil deployment. F, G, Graphic example of initial and delayed angiographic appearances post NEQSTENT and adjunct coil deployment, with stagnation of contrast within the aneurysm.

Supplementary table 1:

ID	Aneurysm characteristics and treatment							Clinical and radiological outcome			
	Location	Rupture status	Dome diameter (mm)	Neck (mm)	DN R	Device size	Complications	Immediate RROC	6 month follow-up	6 month RROC	Re-treatment
1	MCA bifurcation	Unruptured	6.8	5.6	1.2	11	Y	1	MRA	1	No
2	Basilar tip	Ruptured	10.5	7.2	1.5	11	N	1	MRA	1	No
3	ACOM	Ruptured	12.1	4.8	2.5	9	Y	1	MRA	1	No
4	Basilar tip	Ruptured	11.1	5.6	2.0	11	N	1	MRA	1	No
5	Basilar tip	Unruptured	12.0	10.8	1.1	14	N	3a	DSA	3a	Yes
6	ICA termination	Unruptured	5.7	3.4	1.7	7	N	1	MRA	1	No
7	ACOM	Unruptured	6.4	5.6	1.2	9	N	1	MRA	1	No
8	ACOM	Ruptured	14.5	6.8	2.1	14	N	1	MRA	1	No
9	MCA bifurcation	Unruptured	5.0	3.7	1.3	7	N	1	MRA	1	No
10	ACOM	Ruptured	10.7	4.0	2.7	9	N	1	MRA	1	No
11	MCA	Unruptured	5.6	2.9	1.9	7	N	1	CTA	1	No
12	ICA termination	Unruptured	17.0	6.0	2.8	14	N	2	MRA	2	Yes
13	ACOM	Unruptured	7.8	3.6	2.2	9	N	1	MRA	1	No
14	Basilar tip	Ruptured	12.5	9.0	1.4	14	N	1	MRA	1	No
15	ACOM	Ruptured	8.5	5.1	1.7	11	N	1	-	-	No
16	MCA bifurcation	Unruptured	10.3	6.7	1.5	11	N	1	MRA	1	No
17	MCA bifurcation	Ruptured	9.9	5.9	1.7	14	N	1	-	-	No
18	MCA bifurcation	Ruptured	11.7	6.8	1.7	14	N	1	-	-	No
19	Basilar tip	Ruptured	10.2	4.8	2.1	9	N	1	MRA	1	No
20	PCOM	Ruptured	8.1	3.2	2.5	7	N	1	MRA	1	No