

**Online Figure 1:** Fluoroscopic appearance of the CODMAN HAKIM Programmable Valve with integrated SiphonGuard (set to 110 mm H<sub>2</sub>O). Reproduced with permission.



**a**

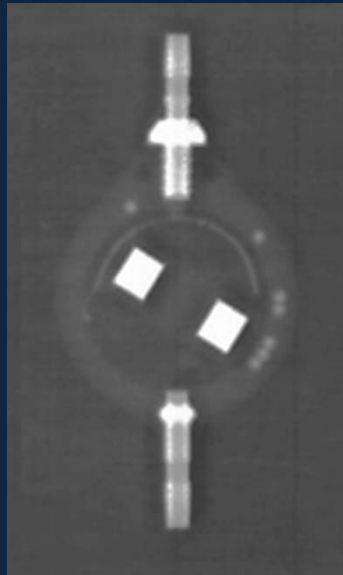


**b**



**c**

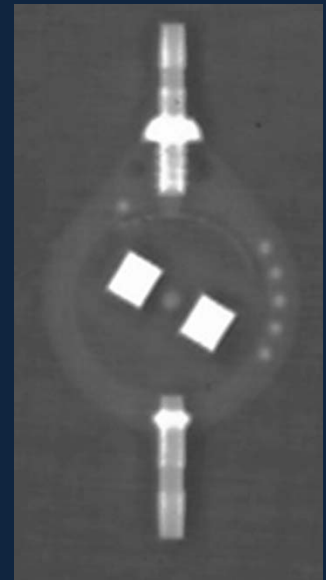
**Online Figure 2:** **a)** Various Medtronic Strata valves with setting adjustment device. Reproduced with permission. **b)** Radiographic appearance of the Medtronic Strata II valve (set to P/L 1.5). Reproduced with permission. **c)** Radiographic appearance of the Medtronic Strata small valve (set to P/L 1.0). Reproduced with permission.



**a**

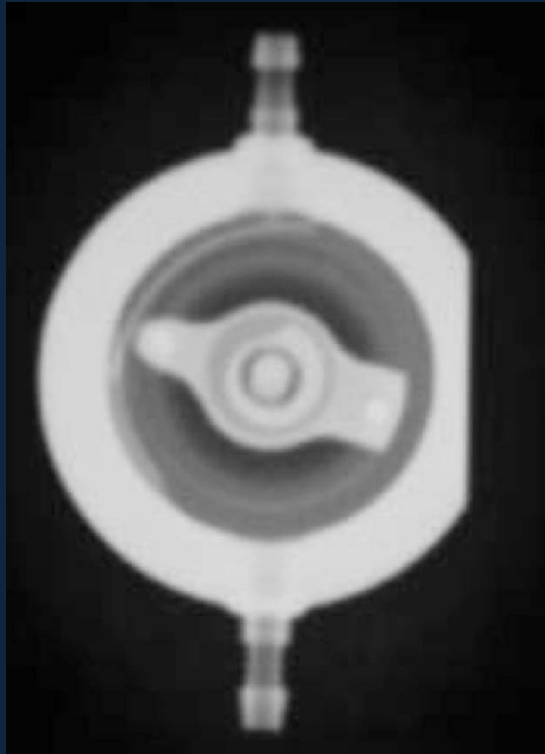


**b**



**c**

**Online Figure 3:** **a)** Radiographic appearance of the Sophysa Sophy SM8 valve (set to Position 8, 200mm H<sub>2</sub>O). Reproduced with permission by Sophysa. **b)** Actual appearance of the Sophysa Polaris SPV valve (set to Position 5, 200mm H<sub>2</sub>O). Reproduced with permission by Sophysa. **c)** Radiographic appearance of the Sophysa Polaris SPV valve (set to Position 5, 200mm H<sub>2</sub>O). Reproduced with permission by Sophysa.



**a**



**b**

**Online Figure 4:** **a)** Radiographic appearance of adjustable unit, Aesculap Miethke proGAV Programmable Shunt System (set to 0 cm H<sub>2</sub>O). Reproduced with permission by Aesculap, Inc. **b)** Radiographic appearance of gravitational unit, Aesculap Miethke proGAV Programmable Shunt System (25 cm H<sub>2</sub>O unit). Reproduced with permission.