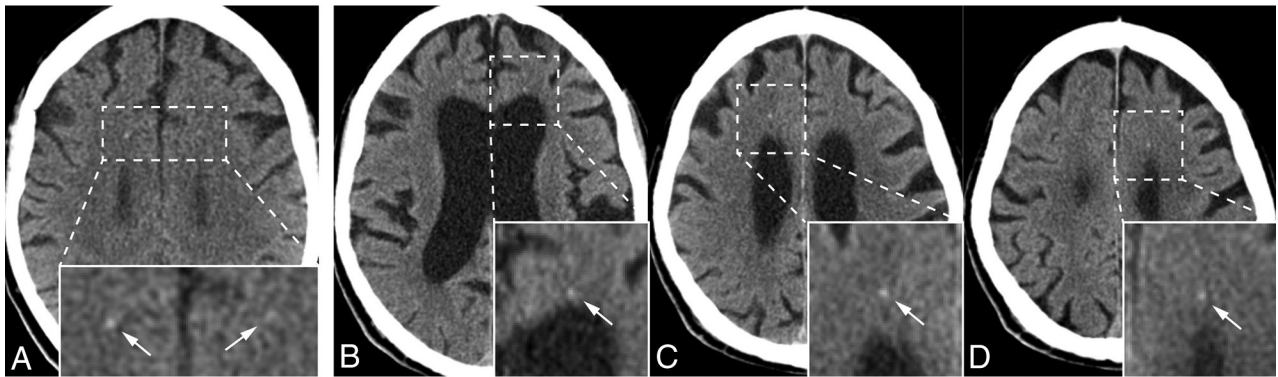
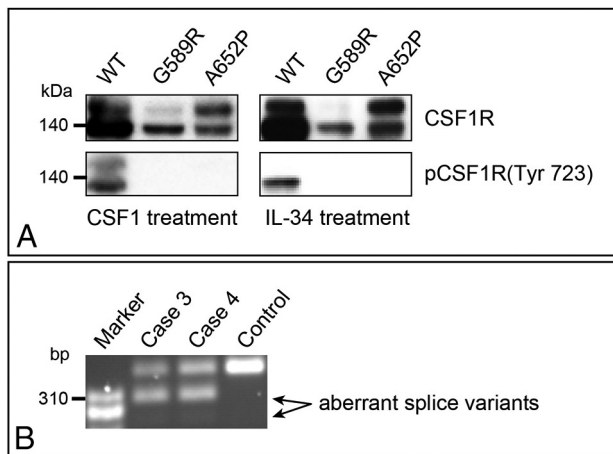


**ON-LINE FIG 1.** A and B, Case 6. Bilateral small calcifications in the frontal white matter adjacent to the anterior horn of the lateral ventricles (arrows). C and D, These calcifications have a stepping stone appearance on sagittal views (arrows, C is the right hemisphere, and D is the left hemisphere).



**ON-LINE FIG 2.** A, Case 7. Extremely slight calcifications bilaterally located in the frontal white matter on axial CT imaging (arrows). B–D, Case 9. Subtle punctate calcifications are seen in the frontal white matter on axial CT images (arrows). Enlarged images of calcifications are inserted in each image.



**ON-LINE FIG 3.** Immunoblot assay shows that mutant *CSF1Rs* (p.Gly589Arg, p.Ala652Pro) fail to be autophosphorylated after treatment with *CSF1R* ligands, colony stimulating factor 1 and Interleukin 34 (A). We detected aberrant splice variants and a normal variant in the messenger RNA from cases 3 and 4 carrying a splice-site mutation, c.2442+5G>A, by reverse transcription polymerase chain reaction (B). There is no apparent difference in the ratio of the aberrant splicing between them.