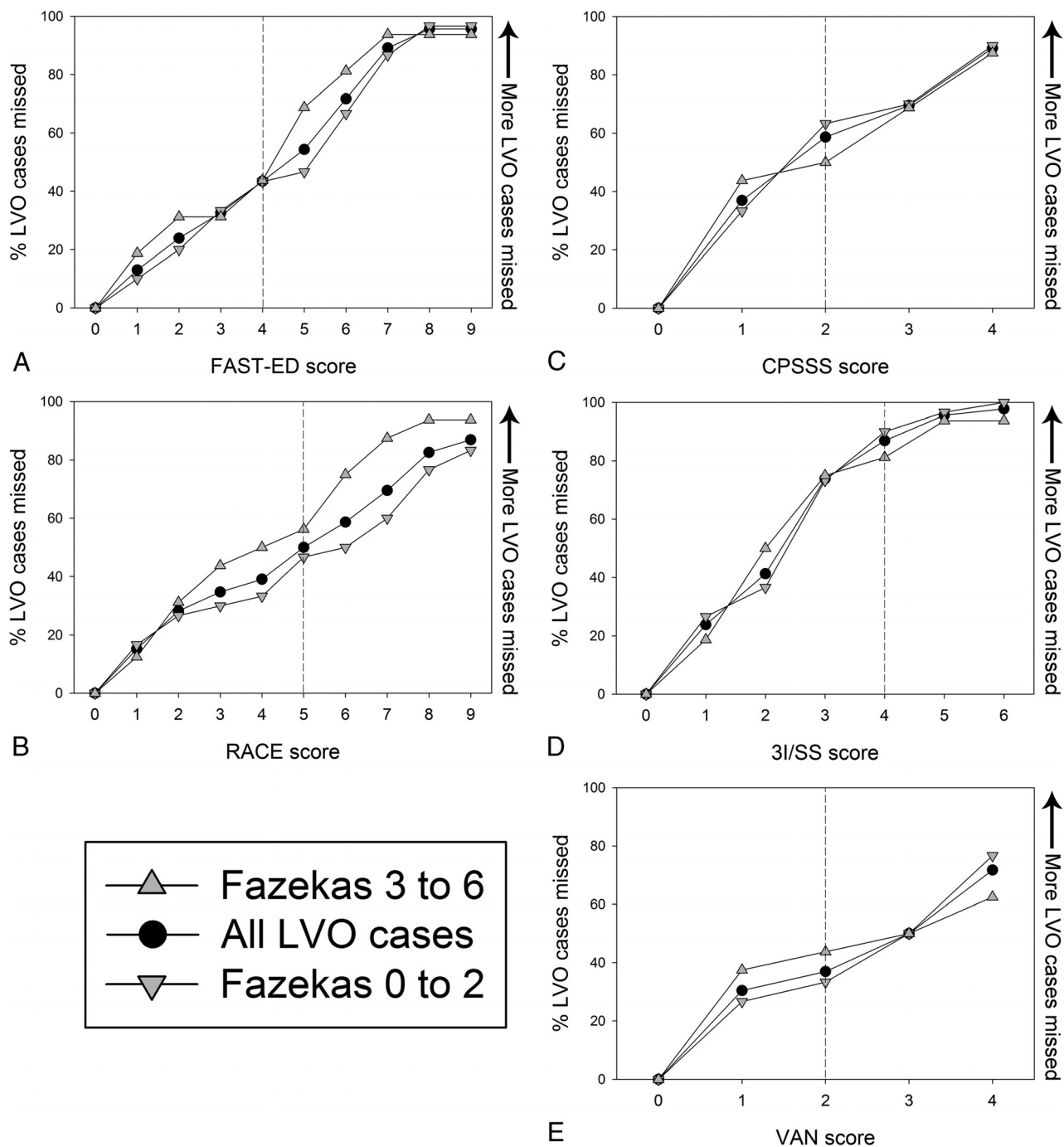


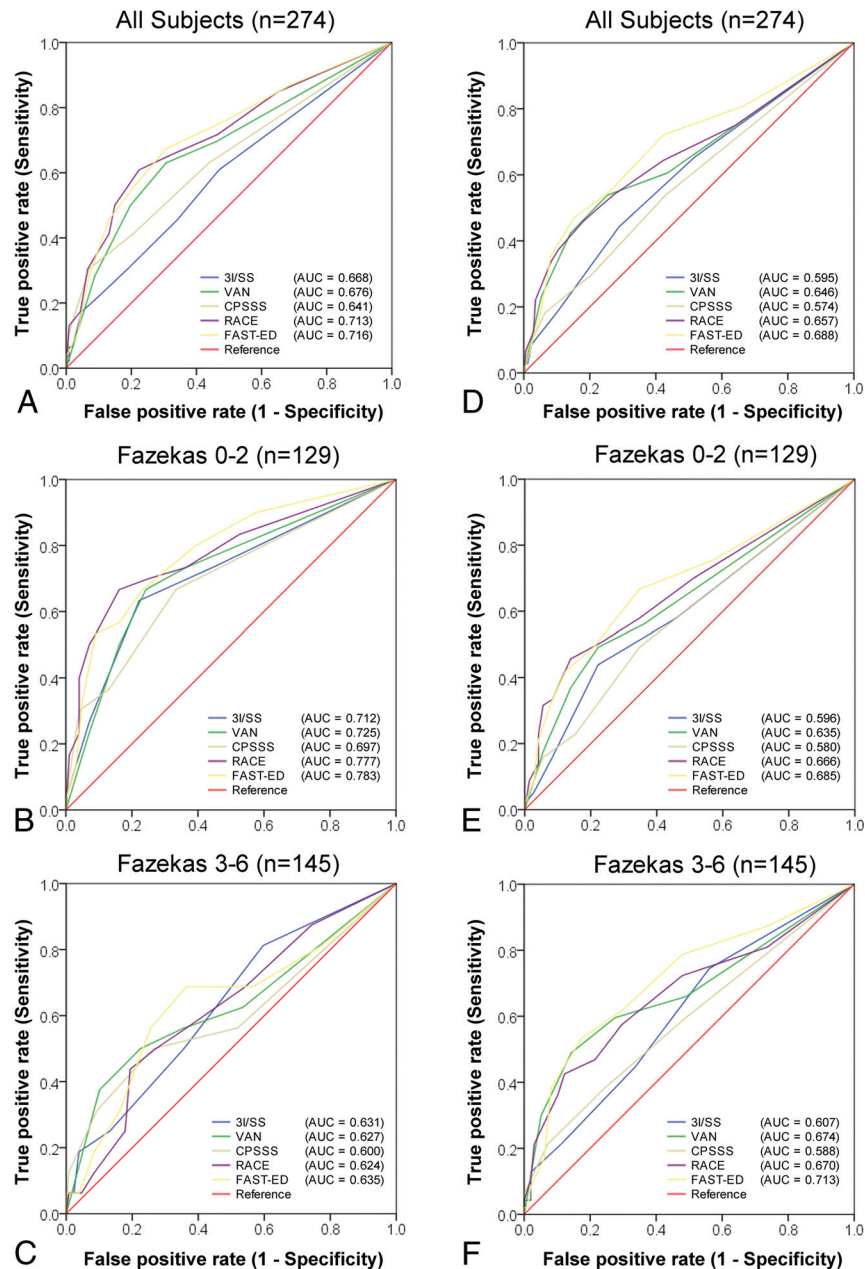
ON-LINE FIG 1. Case-selection flow chart.



ON-LINE FIG 2. Occlusions missed using large-vessel occlusion thresholds stratified by leukoaraiosis severity. The percentage of subjects with verified proximal large-vessel occlusion that would have remained undetected if different score thresholds were applied to select patients for angiographic evaluation. On average, more LVO cases would have remained undetected among subjects with moderate-to-severe leukoaraiosis (Fazekas scale score, 3–6; upfacing triangles). Dashed lines indicate the established LVO scale cutoff.

ICA and MCA-M1 occlusions

Any LVO present



ON-LINE FIG 3. Predictive ability of the tested prehospital stroke scales shown for a strict definition of proximal large-vessel occlusion (A–C) as well as liberated to include any LVO (B–F) in the entire cohort (A and D) as well as stratified to absent-to-mild leukoaraiosis (Fazekas scale score, 0–2; B and E) and moderate-to-severe leukoaraiosis (Fazekas scale score, 3–6; C and F). “Any LVO” denotes inclusion of intracranial ICA, MCA-M1, MCA-M2, vertebral artery, and basilar artery occlusion.