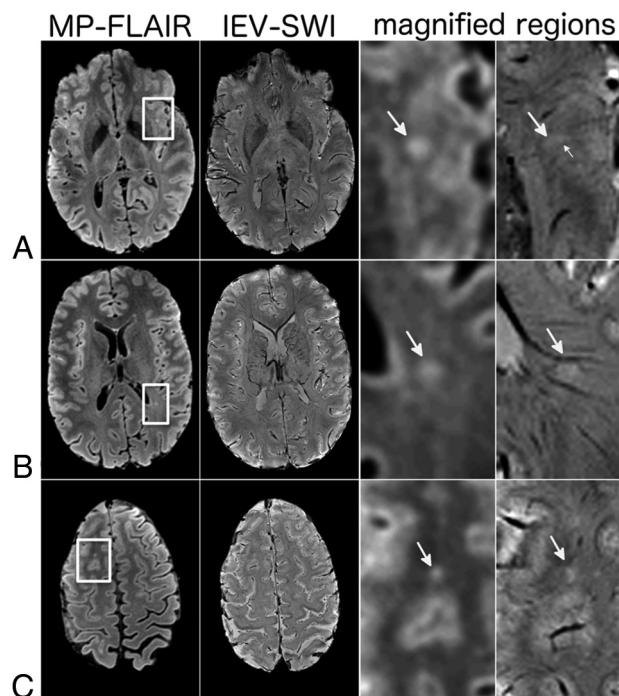


ON-LINE FIG 1. Three examples of MP-FLAIR and IEV-SWI slices and selected magnified regions are shown for 3 patients with RRMS. Several subcortical and periventricular lesions are demonstrated. *A*, The *white arrows* on the magnified IEV-SWI lesion images (rightmost column) identify a vein running through the body of a white matter lesion. *B*, The *arrow* on the magnified regions points to a coffee bean-shaped lesion with a vessel running through it. *C*, The *arrows* point to small, submillimeter vessels running through very small WML in the subcortical white matter region.



ON-LINE FIG 2. Three samples of MP-FLAIR and IEV-SWI of HC subjects. Magnified views of the lesions are presented in the 2 rightmost columns. *A*, The *larger arrows* point to a subcortical white matter lesion, through which a submillimeter vessel is apparent and indicated by the *small white arrow*. *B*, The subcortical lesion is situated between 2 veins. *C*, Another example of a lesion situated next to cerebral veins is demonstrated. The IEV-SWI shows clear delineation of these vessels.