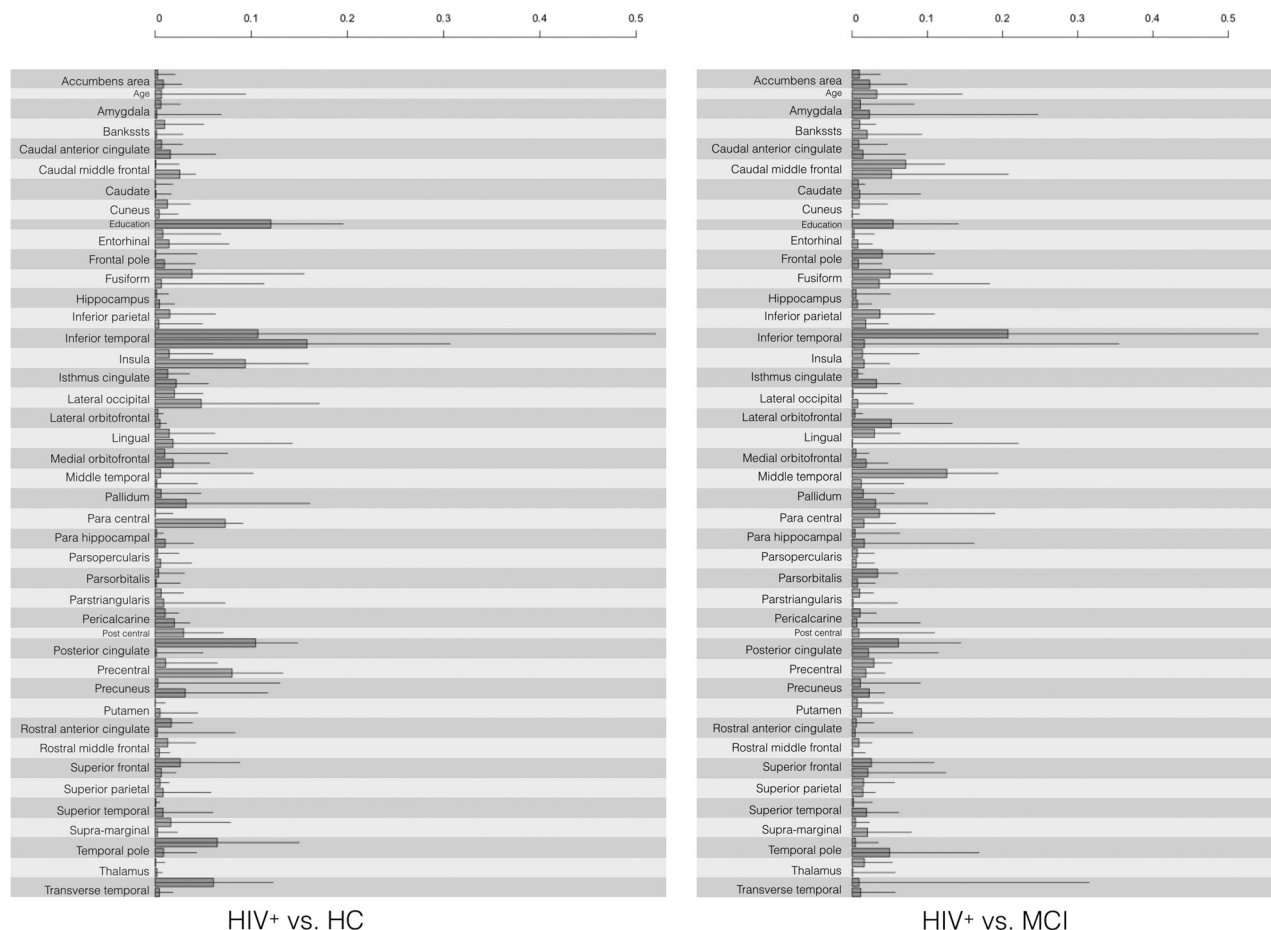


**ON-LINE FIG1.** Data-processing pipeline. Cerebral blood flow map is registered to the Desikan-Killiany atlas using the anatomic data (TIWI) with FreeSurfer. CBF values are extracted from the ROIs to be used in the generalized linear model (GLM). Subj indicates subject; Prob., probability; Coeff., coefficient.



**ON-LINE FIG 2.** The *gray bars* represent the difference in mean coefficients in the GLMnet analysis when including or excluding participants with HAND-MND, and the *black lines* represent the SD of the coefficients for the corresponding brain region. The difference in mean coefficients (including versus without participants with MND) is markedly smaller than the associated SD of the region, suggesting that MND diagnosis does not explain successful classification.