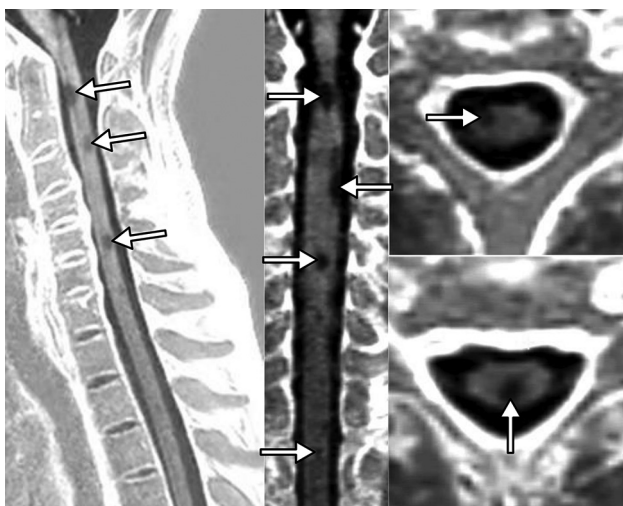


ON-LINE FIG 1. Presentation of the 3D-PSIR-derived images in the sagittal plane, with 2 magnitude images shown (left and middle) and 1 phase-corrected real image (right). Spinal cord lesions are hyperintense on the magnitude image (*black arrows*) and hypointense on the phase-corrected real image (*white arrows*).



ON-LINE FIG 2. 3D-PSIR reformatted in the sagittal (left), coronal (middle), and axial (right) planes. Spinal cord lesions (*white arrows*) are nicely delineated in the 3 dimensions.