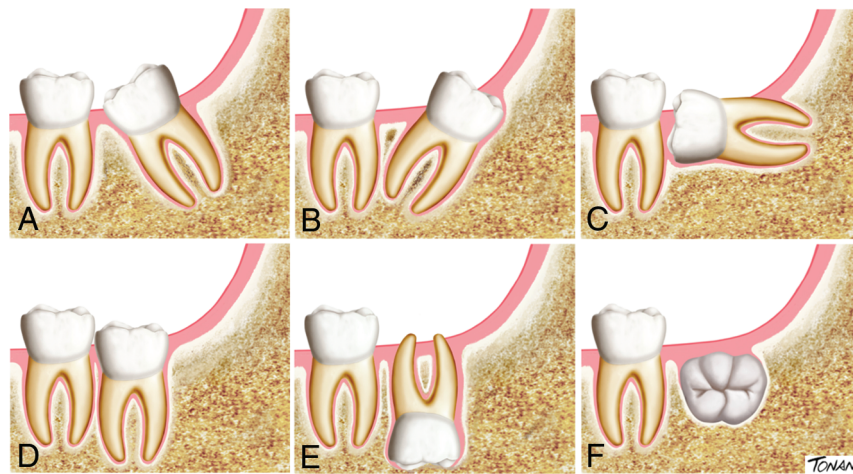
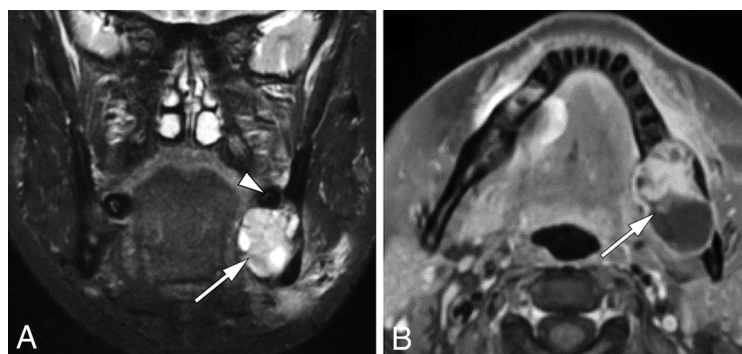


ON-LINE FIG 1. Examples of the Archer classification of maxillary third molar impaction considering the angulation with the second molar: mesioangular (A), distoangular (B), horizontal (C), vertical (D), inverted (E), and buccoangular (F). (Reproduced with permission from Medical Illustrations Rodrigo Tonan.)



ON-LINE FIG 2. Examples of the Winter classification of mandibular third molar impaction considering the angulation with the second molar: mesioangular (A), disastoangular (B), horizontal (C), vertical (D), inverted (E), and transverse (F). (Reproduced with permission from Medical Illustrations Rodrigo Tonan.)



ON-LINE FIG 3. Ameloblastoma. Coronal T2-weighted (A) and axial contrast-enhanced T1-weighted (B) MR images show an expansile lesion with cystic and solid components in the left mandibular angle (arrows), superiorly displacing the third molar (arrowhead). (Courtesy of Dr. Henry Knipe, Radiopaedia.org; rID:53230, <https://radiopaedia.org/cases/ameloblastoma-22>).