

# Shell part of clots

CASE 1 and 2

# Case 1



Shell ( outer 10% of clot)



Inner 90% of Clot



Whole Clot

# Case 1(Platelet-CD42b staining)



Shell ( outer 10% of clot)



Inner 90% of Clot



Whole Clot

# Case 1(VWF staining)



Shell ( outer 10% of clot)

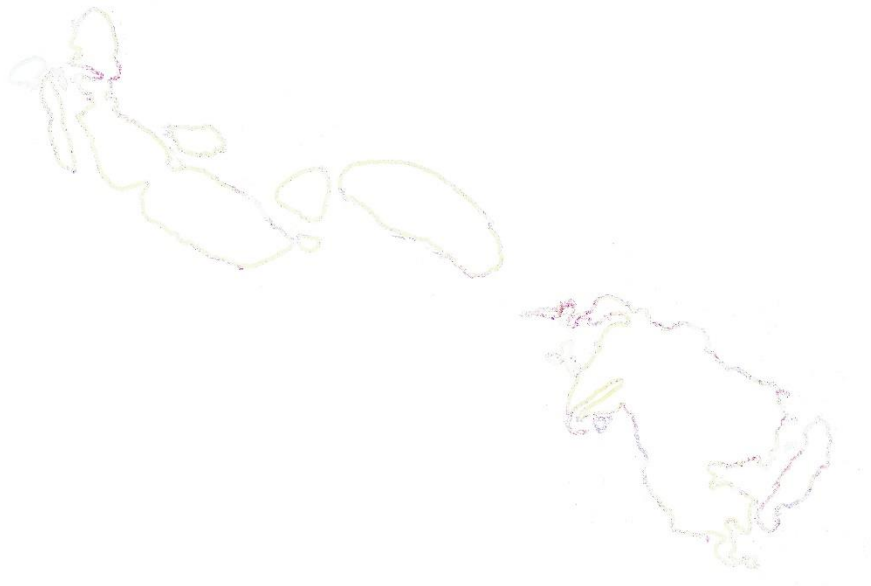


Inner 90% of Clot



Whole Clot

# Case 1 (H3 staining)



Shell ( outer 10% of clot)

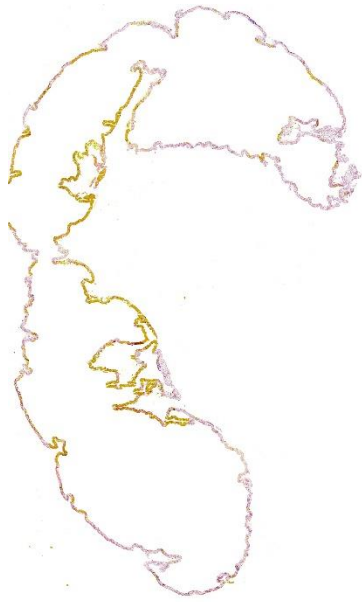


Inner 90% of Clot



Whole Clot

## Case 2 (MSB staining)



Shell ( outer 10% of clot)

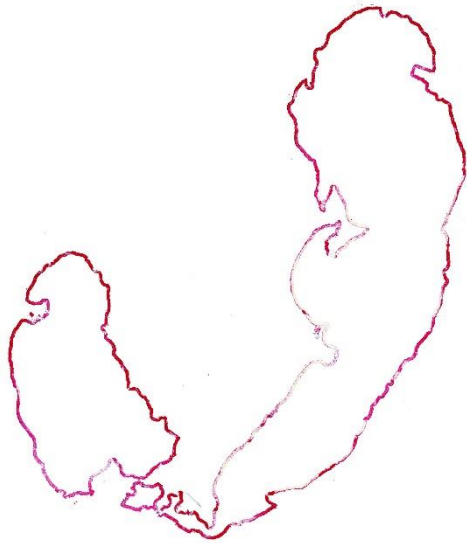


Inner 90% of Clot



Whole Clot

## Case 2 (Platelet-CD42b staining)



Shell ( outer 10% of clot)

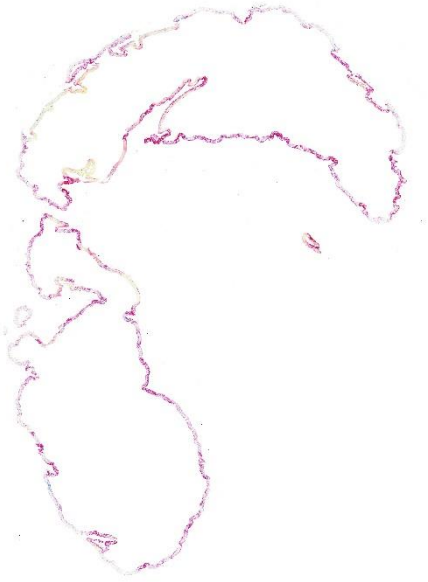


Inner 90% of Clot

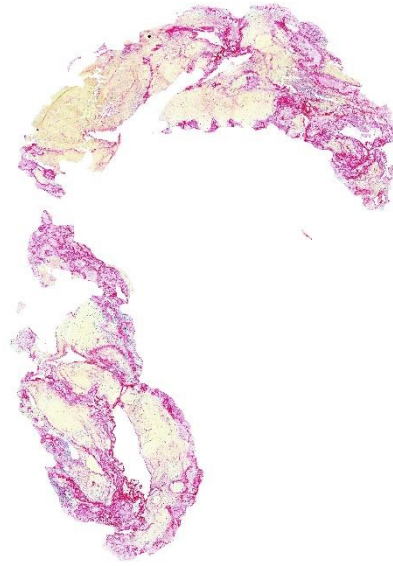


Whole Clot

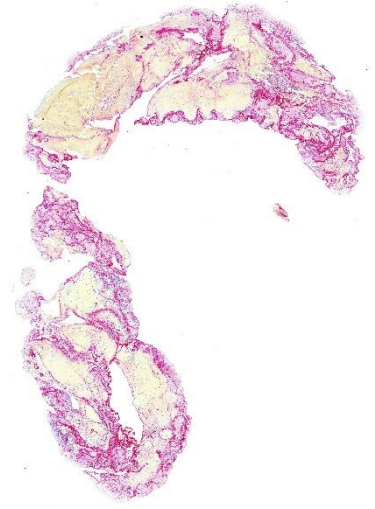
## Case 2 (VWF staining)



Shell ( outer 10% of clot)



Inner 90% of Clot



Whole Clot



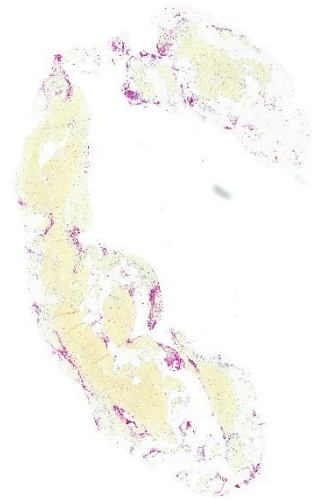
## Case 2 (H3 staining)



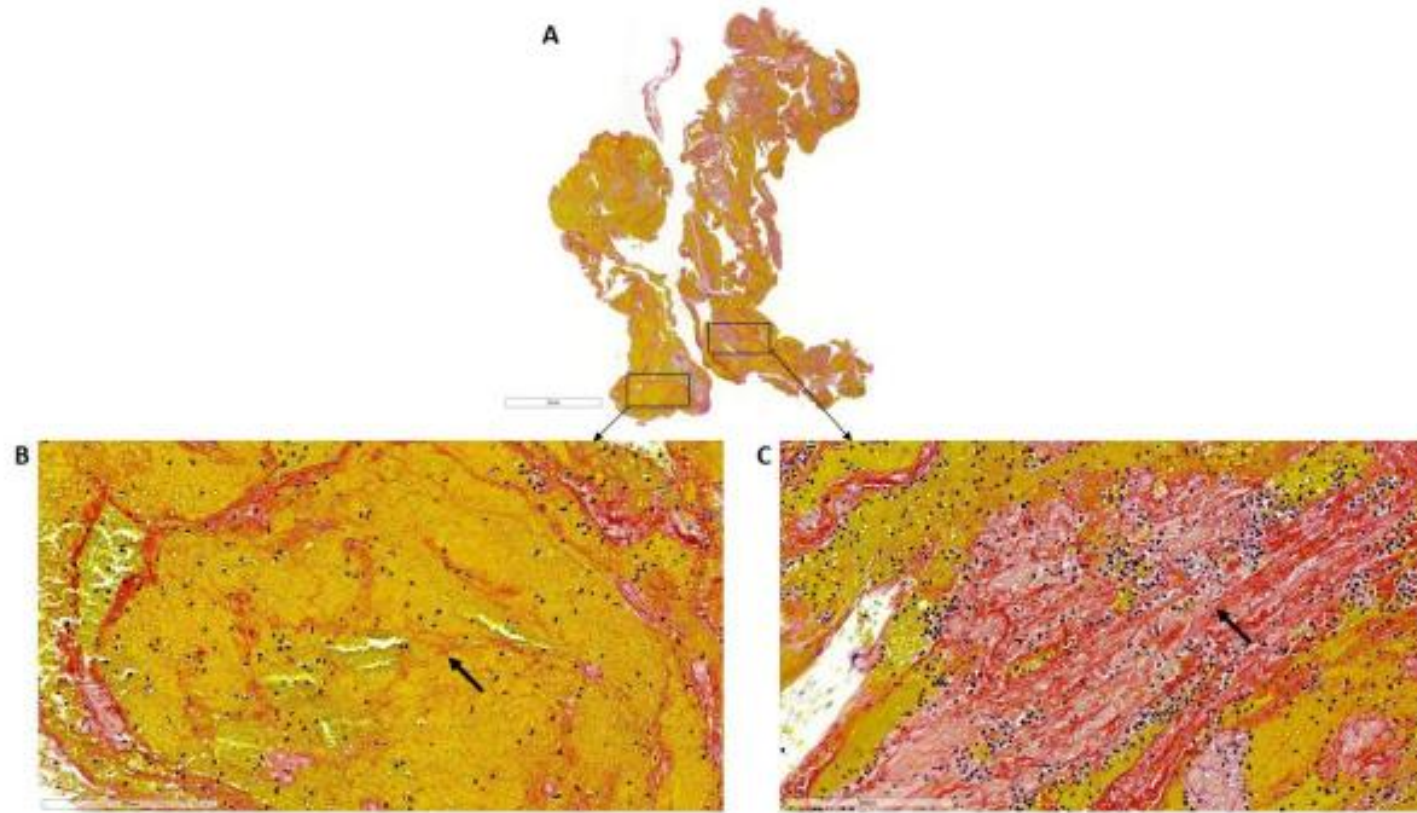
Shell ( outer 10% of clot)



Inner 90% of Clot



Whole Clot



Supplementary figure: Staining of the thrombus retrieved from case one showing the structure of thrombus on MSB staining (A). Magnification shows thin fibrin strands in RBC-rich areas (Arrow) (B) whereas platelet-rich areas show dense thick fibrin strands (Arrow) (C)