

## Supplemental Figures and Legends

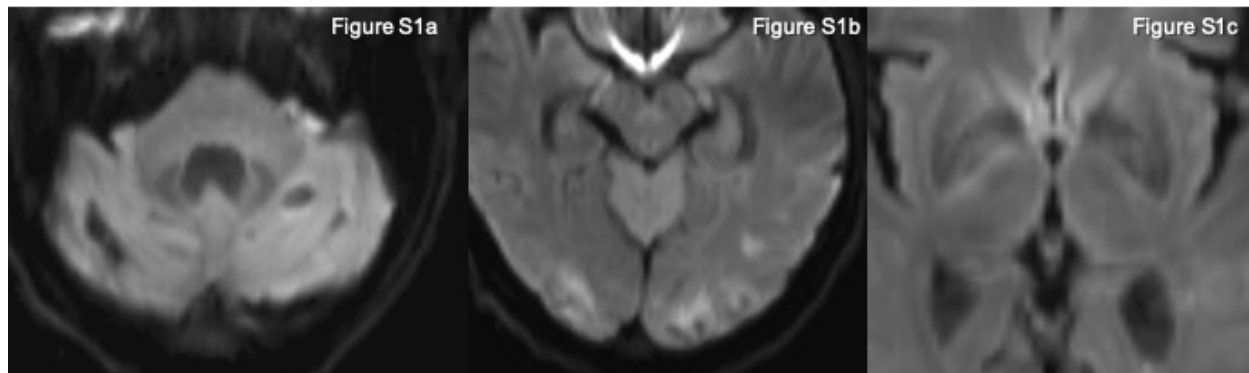


Figure S1. Follow up MRI DWI of Patient 1 from 21 days after presentation shows normalized and resolving areas of the prior DWI abnormality in the cerebellum (S1a), hippocampi and cortex (S1b) and basal ganglia (S1c). ADC map not shown.

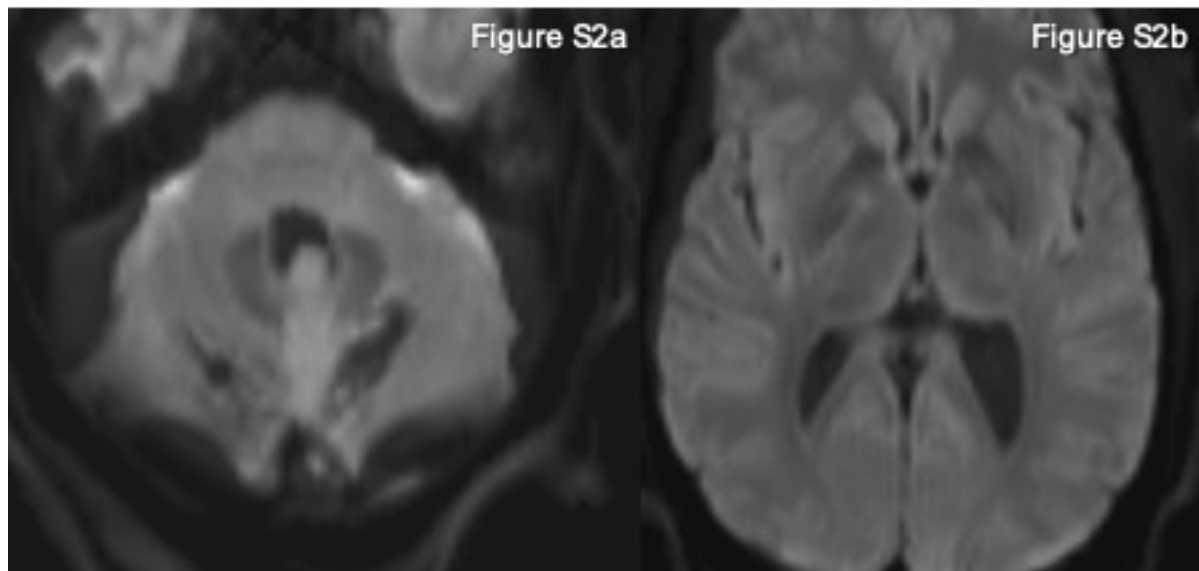


Figure S2. MRI DWI of Patient 2 obtained 14 days after presentation demonstrates expected evolution with normalization of the prior DWI abnormality in the cerebellar hemispheres (S2a) and basal ganglia (S2b).

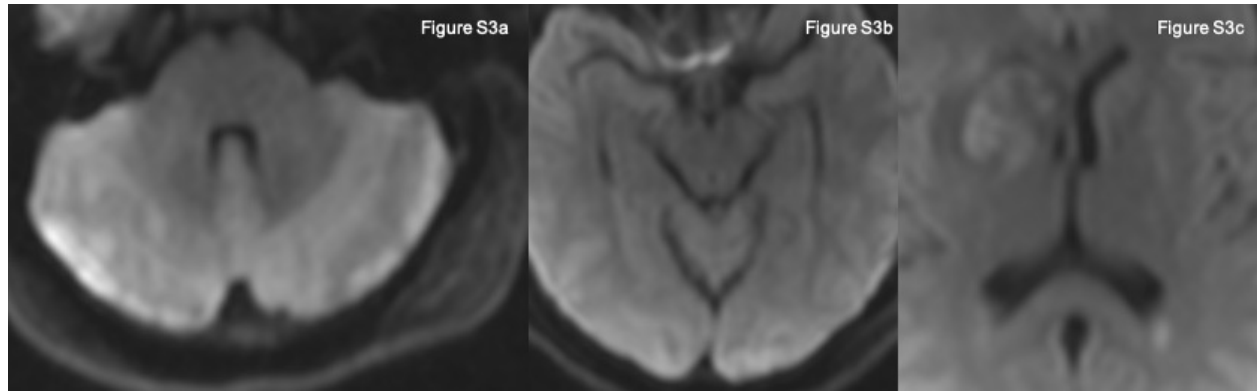


Figure S3. MRI DWI of Patient 3 obtained 14 days after presentation demonstrates normalization and resolution of the prior DWI abnormality in the cerebellum (S3a), the hippocampi and cortex (S3b), and the basal ganglia (S3c).